

# abitex



fireproof



imo-med

## caliente 04242

Dicevano sembrasse un  
gentiluomo spagnolo.

Il motivo era dovuto ai modi  
aristocratici e alle espressioni  
in castigliano che usava  
per attirare l'attenzione.

Una volta, mentre aspettava  
un'amica nell'atrio  
di un albergo,

quando una donna si alzò  
dal divano prese il suo posto.

“In realtà ritorno subito”,  
disse lei. “Bene”, fece lui,  
“le terrò il posto caliente  
finché non torna”.

They said he seemed like  
a Spanish gentleman.  
The reason was due  
to the aristocratic ways  
and expressions in Castilian  
that he used

to attract attention.  
Once, while waiting  
for a friend in the atrium  
of a hotel, a woman got up  
from the sofa and he took  
her seat.

“Actually, I'm coming right  
back,” she said.

“Well,” her answered,”

I will keep the seat caliente  
until you return”.

# abitex

abitex srl

headquarter  
via del cristo 84  
33044 manzano  
ud – italy

legal address  
via enrico fermi 9/11  
35010 cadoneghe  
pd – italy

t +39 0432 746060  
f +39 0432 746035  
p. iva/vat IT04453620280  
www.abitex.eu - info@abitex.eu

## caliente 04242



**IT**  
**codice doganale**  
54079300.  
**utilizzo**  
tende, imbottiti.  
**caratteristiche**  
52% polipropilene, 48% poliestere, altezza cm ± 140, peso ± 210 gr/m<sup>2</sup>.  
**tintura**  
il prodotto è tinta in massa.  
**lunghezza pezzi**  
circa 35 mt.  
**abrasione**  
40.000 cicli, ISO 12947-2.  
**solidità alla luce**  
4/5, ISO 105 B02.  
**solidità allo sfregamento**  
secco 4/5, umido 4, ISO 105 X12.  
**resistenza alla cucitura**  
ordito 2 mm, trama 2 mm, ISO 13936-2.  
**pilling**  
4/5, ISO 12945-2.  
**resistenza al fuoco**  
1M - UNI 9175; EN 1021 1/2; BS 5852 part 1, is 0; California TB 117-2013; IMO FTP Code 307 part 8; IMO FTP Code 307 part 7.  
**attenzione**  
sono ammesse leggere differenze di colore tra differenti partite.

**DE**  
**zolltarifnummer**  
54079300.  
**verwendung**  
vorhänge, polstermöbel.  
**merkmale**  
52% polypropylen, 48% polyester, breite cm ± 140, gewicht ± 210 gr/m<sup>2</sup>.  
**färbung**  
springelärbt.  
**länge des pieces**  
ca. 35 lm.  
**abriebbeständigkeit**  
40.000 zyklen, ISO 12947-2.  
**farbbeständigkeit gegenüber licht**  
4/5, ISO 105 B02.  
**reißchtheit**  
trocken 4/5, feucht 4 mm, ISO 105 X12.  
**nahschleibewiderstand**  
Kette 2 mm, Schuss 2 mm, ISO 13936-2.  
**pillverhalten**  
4/5, ISO 12945-2.  
**feuerbeständigkeit**  
1M - UNI 9175; EN 1021 1/2; BS 5852 part 1, is 0; California TB 117-2013; IMO FTP Code 307 part 8; IMO FTP Code 307 part 7.  
**achtung**  
leichte farbunterschiede zwischen den einzelnen partien sind.

**ES**  
**código aduanero**  
54079300.  
**utilización**  
cortinas, muebles tapizados.  
**características**  
52% polipropileno, 48% poliéster, ancho ± 140 cm, peso ± 210 gr/m<sup>2</sup>.  
**tinte**  
tintura en masa.  
**largo de las piezas**  
aprox. 35 m.  
**esistencia a la abrasión**  
40.000 ciclos martindale, ISO 12947-2.  
**solidez de los colores a la luz**  
4/5, ISO 105 B02.  
**solidez al frote**  
seco 4/5, húmedo 4, ISO 105 X12.  
**resistencia al deslizamiento de hilos**  
urdimbre 2 mm, trama 2 mm, ISO 13936-2.  
**formación de bolitas**  
4/5, ISO 12945-2.  
**resistencia al fuego**  
1M - UNI 9175; EN 1021 1/2; BS 5852 part 1, is 0; California TB 117-2013; IMO FTP Code 307 part 8; IMO FTP Code 307 part 7.  
**atención**  
son admisibles ligeras diferencias de color entre partidas diversas

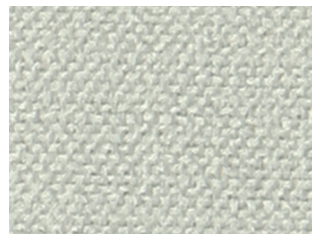
**ZH**  
**海关编号**  
54079300.  
**用途**  
窗帘, 填充物.  
**特性**  
52% 聚丙烯, 48% 涤纶, 高度 ± 140 cm, 重量 ± 210 gr/m<sup>2</sup>.  
**染色**  
浆液染色布.  
**布匹长度**  
约35米.  
**耐磨性能**  
40,000 转, ISO 12947-2.  
**耐光色牢度**  
4/5, ISO 105 B02.  
**耐摩擦色牢度**  
干摩擦 4/5, 湿摩擦 4, ISO 105 X12.  
**起球**  
经向 2 mm, 纬向 2 mm, ISO 13936-2.  
**耐火性能**  
1M - UNI 9175; EN 1021 1/2; BS 5852 part 1, is 0; California TB 117-2013; IMO FTP Code 307 part 8; IMO FTP Code 307 part 7.  
**注意**  
不同批次之间允许存在轻微色差.

**RU**  
**таможенный кодекс**  
54079300.  
**использование**  
шторы, мягкая мебель.  
**характеристики**  
52% полипропилен, 48% полиэстер, высота в см ± 140, вес ± 210 г/м<sup>2</sup>.  
**краситель**  
продукт окрашивается насыльню.  
**длина детали**  
о 35 погонных метрах.  
**устойчивость к изнашиванию**  
40.000 циклов, ISO 12947-2.  
**светостойкость**  
4/5, ISO 105 B02.  
**устойчивость к истиранию**  
сухой 4/5, влажный 4, ISO 105 X12.  
**прочность швов**  
основа 2 мм, уток 2 мм, ISO 13936-2.  
**пиллинг**  
4/5, ISO 12945-2.  
**огнестойкость**  
1M - UNI 9175; EN 1021 1/2; BS 5852 part 1, is 0; California TB 117-2013; IMO FTP Code 307 part 8; IMO FTP Code 307 part 7.  
**внимание**  
допускаются незначительные различия в цвете между различными частями.

**EN**  
**customs code**  
54079300.  
**use**  
curtains, upholstered furniture.  
**features**  
52% polypropylene, 48% polyester, width cm ± 140, weight ± 210 gr/m<sup>2</sup>.  
**dyeing**  
solution dyed product.  
**roll length**  
environ 35 m. lm.  
**abrasion resistance**  
40.000 rotations, ISO 12947-2.  
**colour fastness to light**  
4/5, ISO 105 B02.  
**fastness to rubbing**  
dry 4/5, wet 4, ISO 105 X12.  
**seam slippage**  
warp 2 mm, welt 2 mm, ISO 13936-2.  
**pilling**  
4/5, ISO 12945-2.  
**fire resistance**  
1M - UNI 9175; EN 1021 1/2; BS 5852 part 1, is 0; California TB 117-2013; IMO FTP Code 307 part 8; IMO FTP Code 307 part 7.  
**attention**  
slight colour differences between different batches are allowed.

**FR**  
**code douanier**  
54079300.  
**utilisation**  
rideaux, meubles rembourrés.  
**caractéristiques**  
52% polypropylène, 48% polyester, hauteur cm ± 140, largeur ± 210 gr/m<sup>2</sup>.  
**teinture**  
le produit est teinté dans la masse.  
**longueur des pièces**  
environ 35 m. lm.  
**résistance à l'abrasion**  
40.000 rotations, ISO 12947-2.  
**solidité et résistance des couleurs à la lumière**  
4/5, ISO 105 B02.  
**solidité et résistance au frottement**  
sec 4/5, humide 4, ISO 105 X12.  
**résistance à la couture**  
chaîne 2 mm, trame 2 mm, ISO 13936-2.  
**boulochage**  
4/5, ISO 12945-2.  
**résistance au feu**  
1M - UNI 9175; EN 1021 1/2; BS 5852 part 1, is 0; California TB 117-2013; IMO FTP Code 307 part 8; IMO FTP Code 307 part 7.  
**attention**  
de légères différences de couleur entre différents lots sont admises.

**AR**  
**كود جمركي**  
54079300.  
**مادختسالي**  
رديس، مياطيم، ريوآتس.  
**تيازيم**  
52% بولپروپيلين، 48% بوليسٲٲر، ارتفاع سم ± 140، وزن ± 210 جم/م<sup>2</sup>.  
**غالبص**  
لرولحجم غوبصم جتيمل.  
**عقول لوط**  
كيلوط رتيم 35، بروي ام.  
**للتايل عوقوم**  
40,000 تيارو، ISO 12947-2.  
**عوضال مارت نولال تابيت**  
4/5، ISO 105 B02.  
**ليرفال دض تابيتال**  
4/5، بيطر 4، ISO 105 X12.  
**زيرلا دض تابيت**  
4/5، ISO 12945-2.  
**ببول روط**  
4/5، ISO 12945-2.  
**قيدجول عوقوم**  
1M - UNI 9175; EN 1021 1/2; BS 5852 part 1, is 0; California TB 117-2013; IMO FTP Code 307 part 8; IMO FTP Code 307 part 7.  
**مادتسالي**  
نكيب نولال ب فقيفطال تافالبتخال عوم بيم فقيل جتيمل تايفيل.



100



400

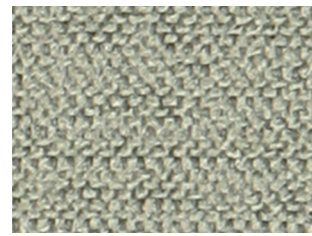


405

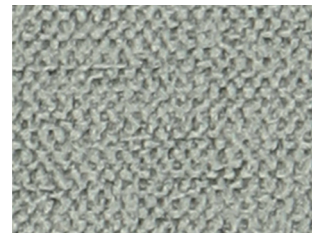


801

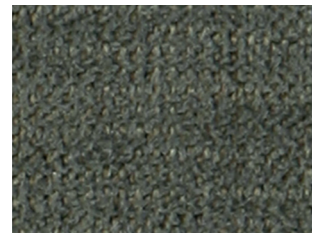
abitex  
caliente - 04242



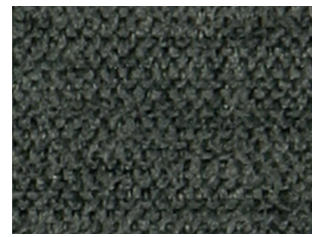
602



605



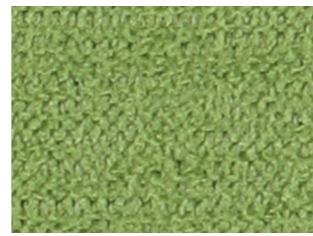
603



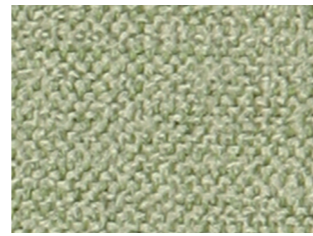
600



200



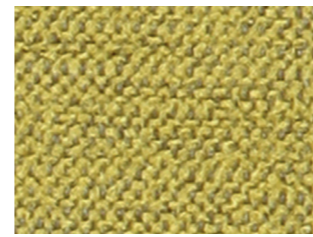
800



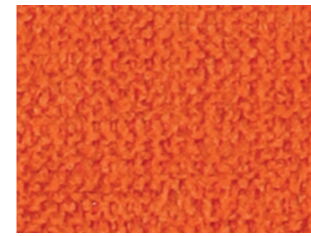
802



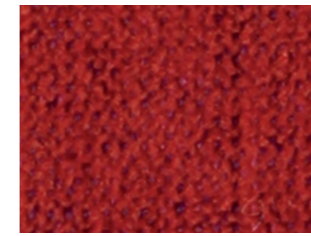
804



500



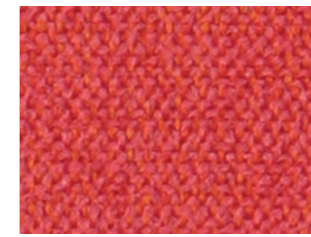
307



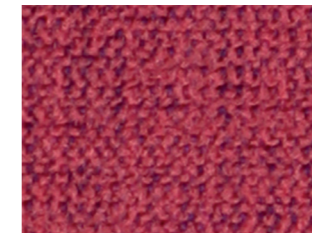
901



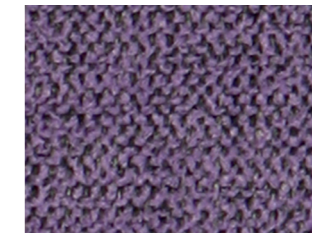
309



900



911



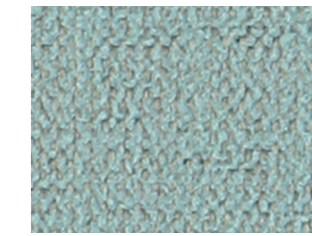
001



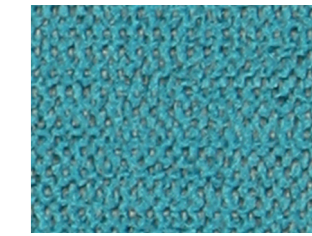
003



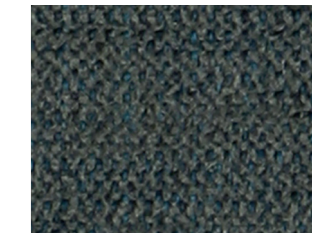
002



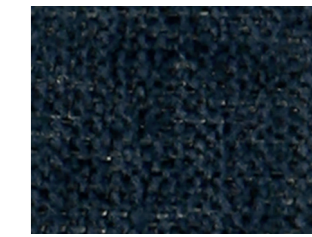
703



701



700



702



705



abitex

