
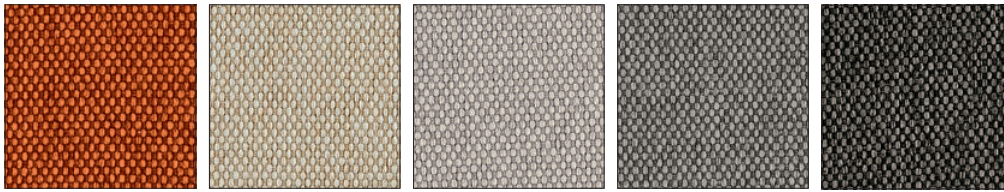


 PROGRAMMA MADE TO ORDER - CATEGORIA A

BERNA | 100% PL gr/m² 350 | Martindale >100.000 cicli/rubs - EN ISO 12947-2 



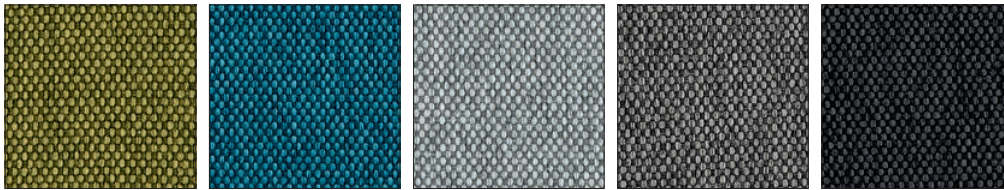
1S0V
ARANCIONE

1SA2
ECRU

1SA3
SABBIA

1SA4
ARGILLA

1SA6
TORTORA




1SA7
VERDE

1SA8
BLU

1SB0
CERULEO

1SB1
GRIGIO

1SB2
FUMO

VENICE | 100% PL gr/m² 430 | Martindale >100.000 cicli/rubs - EN ISO 12947-2 



S0F
SABBIA

S0G
TERRA

S0H
BOSCO

S0J
OCEANO

S0K
MATTONE

S0L
CENERE

S0U
ROSA



S0Y
NERO

S0Z
CANAPA

SVX
GHIACCIO

SVY
BEIGE

SVZ
VERDE

SWA
GRIGIO CHIARO

SWB
SENAPE



SWC
CIPRIA

SWD
AMBRA

SWE
BLU

 PROGRAMMA MADE TO ORDER - CATEGORIA A

VINTAGE | 55% PU - 29% CO - 16% PL gr/m² 393 | Martindale >100.000 cicli/rubs - EN ISO 5470-2 Met.1



S0A
DESERTO

S0B
TABACCO

S0C
EBANO

S0W
CENERE

S0X
CANAPA

 PROGRAMMA MADE TO ORDER - CATEGORIA B

BERGEN | 100% PL gr/m² 569 | Martindale >100.000 cicli/rubs - EN ISO 12947-2



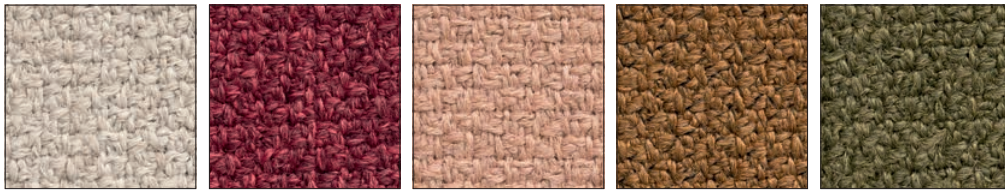
S2M
OTTANIO

S2N
TERRA

S2P
CENERE

S2Q
TERRACOTTA

S2R
SABBIA



S2S
ECRU

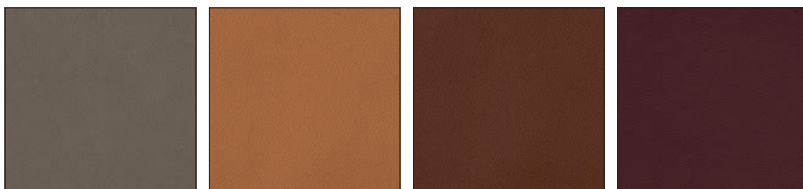
S2T
ROSSO

S2U
ROSA

S2V
SENAPE

S2W
VERDE

SOFTER | 75% PVC - 22% PL - 3% PU gr/m² 680 | Martindale >100.000 cicli/rubs - EN ISO 12947-2




SLR
FANGO

SLS
COGNAC

SLT
TABACCO

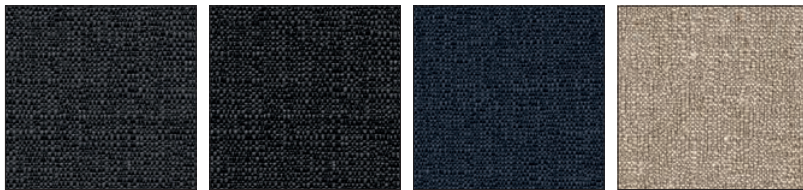
SLU
BORGOGNA

 PROGRAMMA MADE TO ORDER - CATEGORIA C



DENVER |  Teflon™ is a registered trademark of The Chemours Company FC LLC, used under license by Calligaris S.p.a.
41% VI - 21% PL - 18% LI - 15% CO - 4% PC - 1% AF gr/m² 327 | Martindale 20.000 cicli/rubs - EN ISO 12947-2

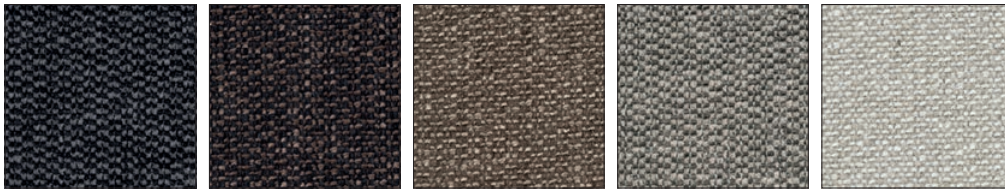


A02 SABBIA
A03 CORDA
A04 TORTORA
A05 ARGILLA
A06 CAFFÈ



A07 FUMO
A08 ANTRACITE
A09 BLU
A0B AVANA

MALMO |   79% PL - 16% CO - 5% PC gr/m² 442 | Martindale >40.000 cicli/rubs - EN ISO 12947-2



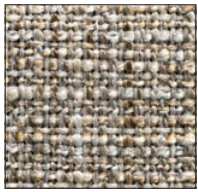
SQ1 ANTRACITE
SQ2 CAFFÈ
SQ3 CORDA
SQ4 TORTORA
SQ5 SABBIA



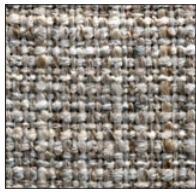
SQ6 ACQUAMARINA
SQ7 ROSSO
SQ8 SENAPE

 PROGRAMMA MADE TO ORDER - CATEGORIA D

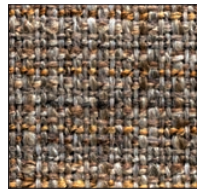
KALIX | 54% PC - 46% PL gr/m² 440 | Martindale 40.000 cicli/rubs - EN ISO 12947-2



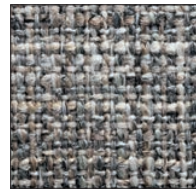
S8P
ECRU



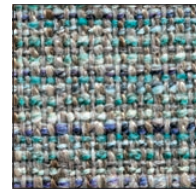
S8Q
SABBIA



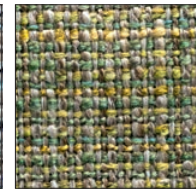
S8R
MARRONE



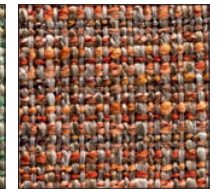
S8S
GRIGIO



S8T
BLU



S8U
VERDE

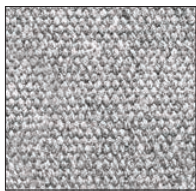


S8V
ROSSO

REGEN | 75% CO - 25% PL gr/m² 510 | Martindale 50.000 cicli/rubs - EN ISO 12947-2



SQZ
BEIGE



SRA
GRIGIO CHIARO



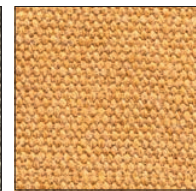
SRB
MARRONE



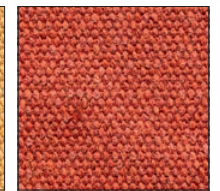
SRC
ANTRACITE



SRD
VERDE



SRE
GIALLO



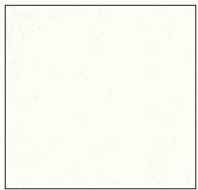
SRF
ARANCIO

SKUBA | 84% PVC - 10% PL - 6% PU gr/m² 700 | Martindale >100.000 cicli/rubs - EN ISO 5470-2 Met.1

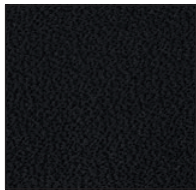


*

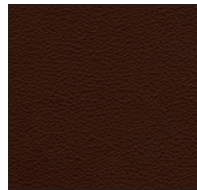
Pulire utilizzando solo acqua tiepida e sapone neutro.



S92
BIANCO OTTICO



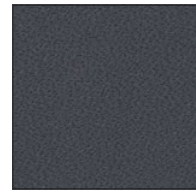
S93
NERO



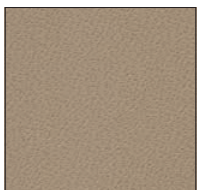
S94
MOKA



S95
TORTORA



S96
GRIGIO



S98
NOCCIOLA



S99
SENAPE



SA0
SKY BLUE

 PROGRAMMA MADE TO ORDER - CATEGORIA E

BOUCLÉ | 37% PL - 21% PC - 19% VI - 14% CO - 8% LI - 1% PA gr/m² 522 | Martindale 40.000 cicli/rubs - EN ISO 12947-2



SLV
CANAPA



SLW
ANTRACITE

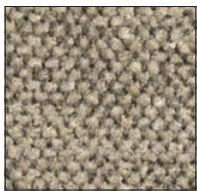


SLX
TORTORA

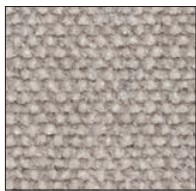


SSQ
MATTONE

CULLINAN | 40% VI - 35% CO - 25% PC gr/m² 600 | Martindale 30.000 cicli/rubs - EN ISO 12947-2



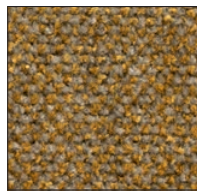
ST8
ECRU



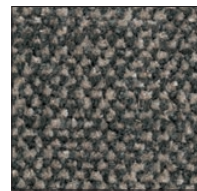
ST9
BIANCO



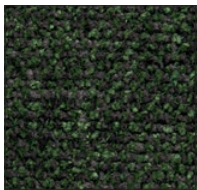
SU0
MARRONE



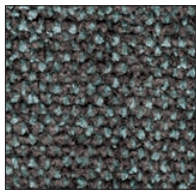
SU1
GIALLO



SU2
GRIGIO



SU3
VERDE



SU4
BLU



SU5
ROSA

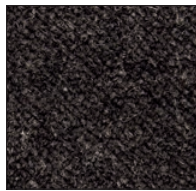
MOGOL | 87% PL - 13% LI gr/m² 436 | Martindale >95.000 cicli/rubs - EN ISO 12947-2



S5J
BIANCO



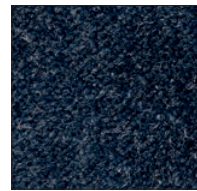
S5K
ECRU



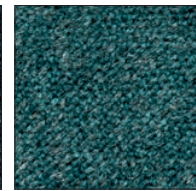
S5L
MARRONE



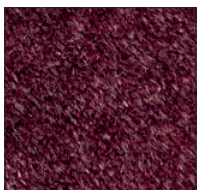
S5M
ANTRACITE



S5N
BLU



S5P
ACQUAMARINA



S5Q
BORDEAUX



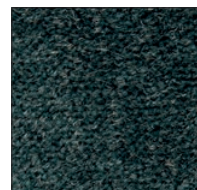
S5R
ROSA



S5S
GIALLO



S5T
VERDE



S5U
BOSCO

 PROGRAMMA MADE TO ORDER - CATEGORIA E

PARIS | 47% PC - 22% PL - 20% CO - 11% VI gr/m² 714 | Martindale 40.000 cicli/rubs - EN ISO 12947-2



SQM
CREMA



SQN
BEIGE



SQP
MARRONE



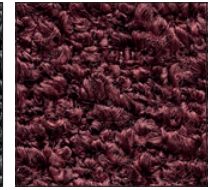
SQQ
GRIGIO CHIARO



SQR
TORTORA



SQS
ANTRACITE



SQT
BORDEAUX



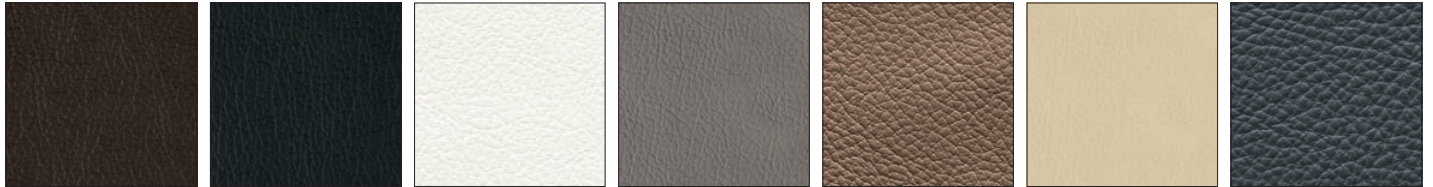
SQU
BLU



PROGRAMMA MADE TO ORDER - CATEGORIA F

PELLE ESPRIT

La pelle utilizzata da Calligaris si ottiene dalla parte più nobile del pellame (il fiore) di bovino europeo tagliato in spessori variabili secondo le esigenze e sottoposto a concia. La finitura esterna è ottenuta con pigmenti a base d'acqua.



470
CAFFÈ

683
NERO

705
BIANCO OTTICO

D04
TORTORA

L01
ANTILOPE

L08
CREMA

L16
GRIGIO



PROGRAMMA MADE TO ORDER - CATEGORIA G

PELLE EMOTION STANDARD

Pelle bovina mezzo fiore a grana naturale di spessore finito 1,2 - 1,4 mm. Tintura passante; rifinitura con pigmenti e resine. Articolo con mano morbida, tatto ceroso e aspetto semiopaco.



L1A
ZINC

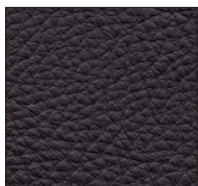
L1L
BUCKSKIN

L1U
HEZELNUT

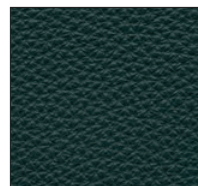
L2V
SIAM

L3A
AUBERGINE

L3E
JASPER



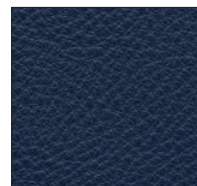
L3Q
EBONY



L4F
BOTTLE



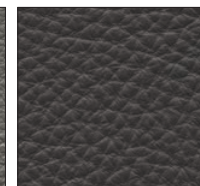
L4J
PACIFIC



L4L
INDIGO



L5G
GRAYSTONE



L5H
GRAYSHADOW

PELLE EMOTION EXTENDED

Pelle bovina mezzo fiore a grana naturale di spessore finito 1,2 - 1,4 mm. Tintura passante; rifinitura con pigmenti e resine. Articolo con mano morbida, tatto ceroso e aspetto semiopaco.



L1B
PENICILLIN

L1C
PAPYRUS

L1D
SOUL WHITE

L1E
PORCELAIN

L1F
IVORY

L1G
SAND

L1H
DESERTSTORM



L1J
CAFFELLATTE

L1K
MOUTON

L1M
CLAY

L1N
AVANA

L1P
TAN

L1Q
LION

L1R
CINNEMON



L1S
SWAMP

L1T
COTTO

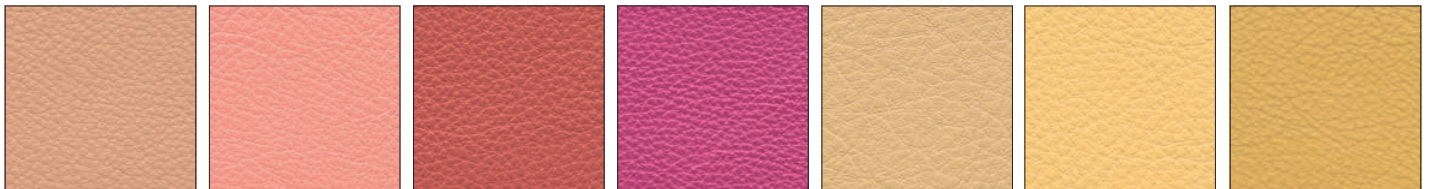
L1V
ECUREIL

L1W
BRAUN

L1X
DASH

L1Y
MARBLE

L1Z
PILL



L2A
CORIANDER

L2B
FACEPOWDER

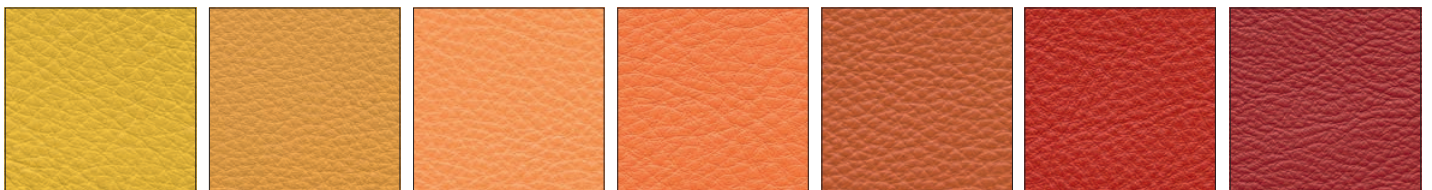
L2C
FOND-DE-TEIN

L2D
ENERGY

L2E
LIGHT

L2F
CIQUITA

L2G
PERGAMENA



L2H
LEMON GRASS

L2J
CARIOCA

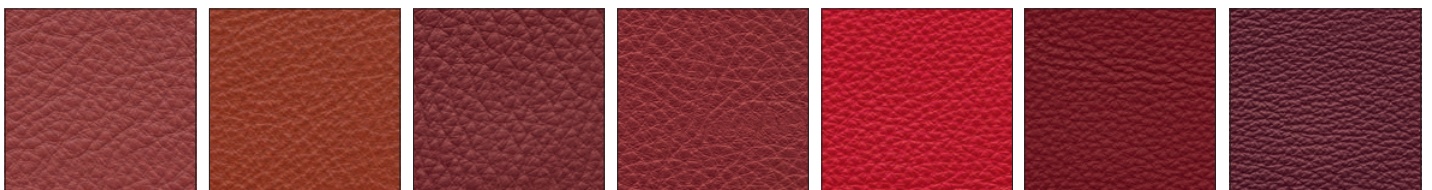
L2K
PEACH

L2L
SUNSET

L2M
CLAW

L2N
REDORANGE

L2P
BEGONIA



L2Q
POT-PURRY

L2R
HENNA

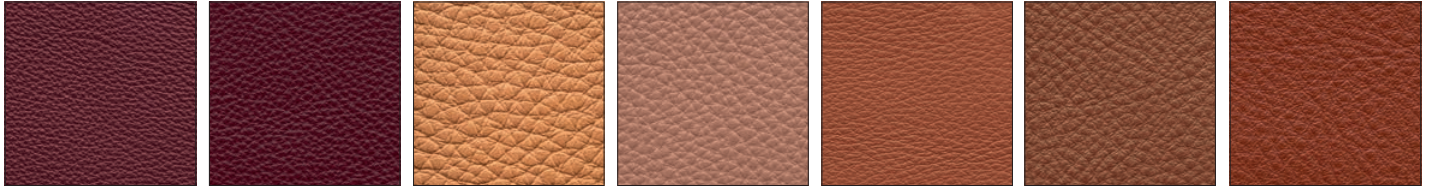
L2S
BLOOD

L2T
ANTIQUE

L2U
PARROT

L2W
PHONEBOX

L2X
BOMBAY



L2Y WINE
L2Z RIBES
L3B DUNE
L3C POTTERY
L3D VOLCANO
L3F HORSE
L3G CROCUS



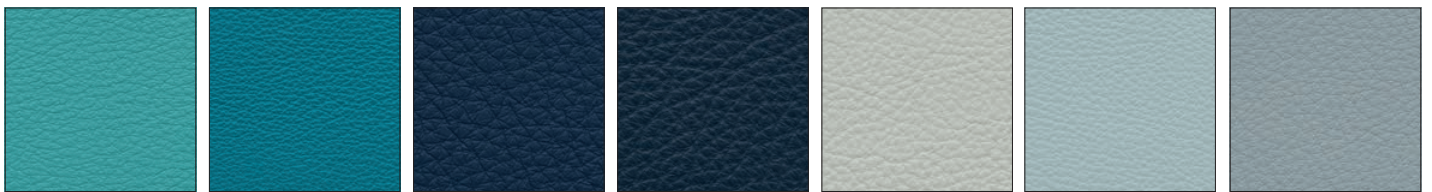
L3H CARRUBO
L3J ANTILOP
L3K ACAJOU
L3L PEATMOOS
L3M CHESTNUT
L3N CIOCCO
L3P ROOT



L3R S.BREEZE
L3S LIME
L3T MOUD
L3U TERRAGON
L3V ALOE
L3W CAMOUFLAGE
L3X BIRCH



L3Y AQUA AZUL
L3Z MALDIVE
L4A OXIDE
L4B LICHENE
L4C OTTANIO
L4D BLU PETROL
L4E CEDAR GREEN



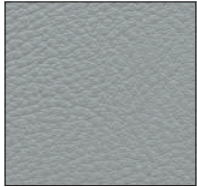
L4G POLINESIA
L4H TURQUOISE
L4K OCEANIA
L4M DEEP
L4N PLASTER
L4P CRUSHED ICE
L4Q MORNING FOG



L4R NORTH POLE
L4S SANTORINI
L4T STEEL BIRD
L4U MATISSE
L4V PEARL
L4W LAMB
L4X CINDER



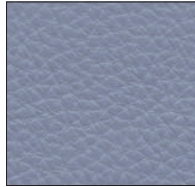
PROGRAMMA MADE TO ORDER - CATEGORIA H



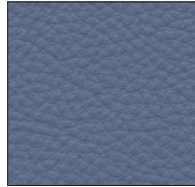
L4Y
CIMENT



L4Z
WISTERIA



L5A
MILKA



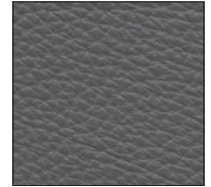
L5B
LAVANDER



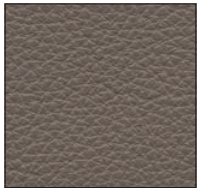
L5C
TURTLEDOVE



L5D
SMOKE



L5E
IRON



L5F
GREY



L5J
BLACK INK



Modello certificato Forest Stewardship Council®
Forest Stewardship Council® certified Model

Richiedi i prodotti certificati FSC®
Ask for FSC® certified products

COMPANY WITH
MANAGEMENT SYSTEM
CERTIFIED BY DNV
ISO 9001 • ISO 14001

Tutte le confezioni dei prodotti di Calligaris S.p.A. contengono la "Scheda prodotto" che ottempera alle disposizioni del D.L. 206 / 2005 "CODICE DEL CONSUMO" e al decreto del 08 febbraio 1997 n. 101 "Regolamento d'attuazione".
Il presente listino ha carattere puramente illustrativo. Calligaris S.p.A. declina ogni responsabilità per eventuali non conformità di colori delle finiture dei materiali utilizzati. Caratteristiche e dimensioni di tutti i prodotti sono soggetti a variazioni senza preavviso e non sono impegnative per la Calligaris S.p.A..
I marchi e i segni distintivi riportati nel presente listino sono validamente registrati e di esclusiva proprietà della Calligaris S.p.a. Il rivenditore si obbliga a utilizzare correttamente il materiale promozionale e pubblicitario fornito dalla Calligaris S.p.a., senza, in alcun modo, ledere i marchi e i segni distintivi in esso riportati.