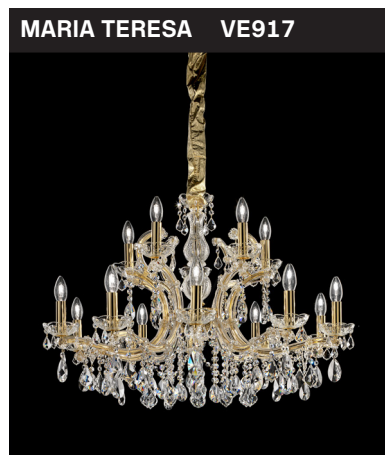


VE 917

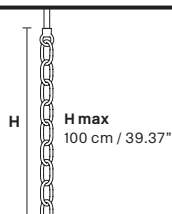
Technical Info

Design by: m_p studio



MARIA TERESA VE917

Standard chain



MT/CG



MT
Traditional version

CG
Coloured glass version

LIGHTING	Traditional E14 lightbulbs
SIZE	With lampshades, overall diameter is 5 cm (2") larger than specified
FRAME	<p>MT Chrome or gold plated metal covered with transparent glass</p> <p>CG Painted metal covered with painted glass</p>
LAMPSHADES	<p>MT No lampshades included</p> <p>CG No lampshades included</p>
PENDANTS	<p>MT Transparent glass or crystal</p> <p>CG Coloured glass</p>

CE RW/DW

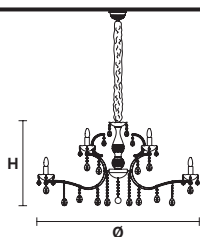


RW
RGB-W Led version

DW
Dynamic White Led version

LIGHTING	WHITE LED sources CRI>90
RGB-W	each light 330 Nominal lm at 3000K
DW	each light 490 Nominal lm at 4700K
SIZE	Same size as MT or CG
FRAME	Chrome or gold plated metal covered with transparent glass
LAMPSHADES	No lampshades included
PENDANTS	transparent glass or crystal

VE 917/15



TECHNICAL INFORMATION

Ø	85 cm / 33.46"
H	60 cm / 23.62"
W	18 kg / 39.68 lb

LIGHTING SYSTEM

15×E14×40 W max (not included).
Triac Dimmable

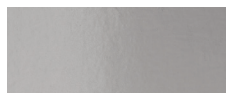
VERSION

VE 917/15 MT - CG

15×LED source -60 W tot (driver included).
Control system: DMX or Masiero Smart Light App

VE 917/15 RW/DW

MT TRADITIONAL



G04 Shiny chrome



G03 Shiny gold

MT DYNAMIC WHITE



MT RGB - W - LED



MT COLOURED GLASS



VE 917

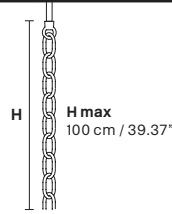
Technical Info USA

Design by: m_p studio



MARIA TERESA VE917

Standard chain



MT/CG



MT
Traditional version
CG
Coloured glass version

LIGHTING	Traditional E12 lightbulbs
SIZE	With lampshades, overall diameter is 5 cm (2") larger than specified
FRAME	MT Chrome or gold plated metal covered with transparent glass CG Painted metal covered with painted glass
LAMP SHADES	MT No lampshades included CG No lampshades included
PENDANTS	MT Transparent glass or crystal CG Coloured glass

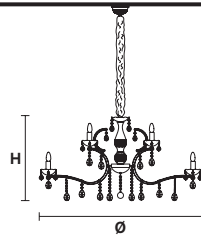
CE RW/DW



RW
RGB-W Led version
DW
Dynamic White Led version

LIGHTING	WHITE LED sources CRI>90 RGB-W each light 330 Nominal lm at 3000K DW each light 490 Nominal lm at 4700K
SIZE	Same size as MT or CG
FRAME	Chrome or gold plated metal covered with transparent glass
LAMP SHADES	No lampshades included
PENDANTS	transparent glass or crystal

VE 917/15



TECHNICAL INFORMATIONS	
Ø	85 cm / 33.46"
H	60 cm / 23.62"
W	18 kg / 39.68 lb

LIGHTING SYSTEM
15×E12×40 W max (not included). Triac Dimmable

VERSION
VE 917/15 MT- CG

15×LED source -60 W tot (driver included). Control system: DMX or Masiero Smart Light App
--

VERSION
VE 917/15 RW/DW

MT TRADITIONAL

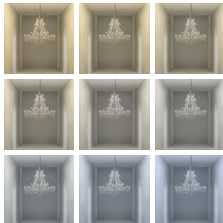


G04 Shiny chrome



G03 Shiny gold

MT DYNAMIC WHITE



MT RGB - W - LED



MT COLOURED GLASS

