
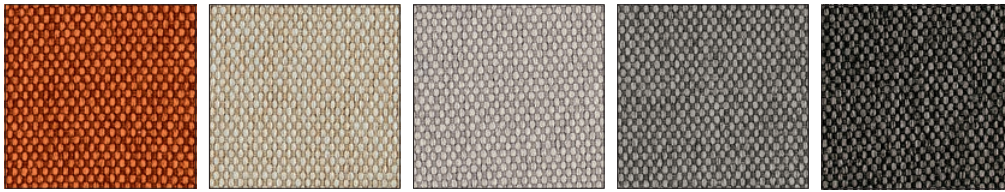


 PROGRAMMA MADE TO ORDER - CATEGORIA A

BERNA | 100% PL gr/m<sup>2</sup> 350 | Martindale >100.000 cicli/rubs - EN ISO 12947-2 



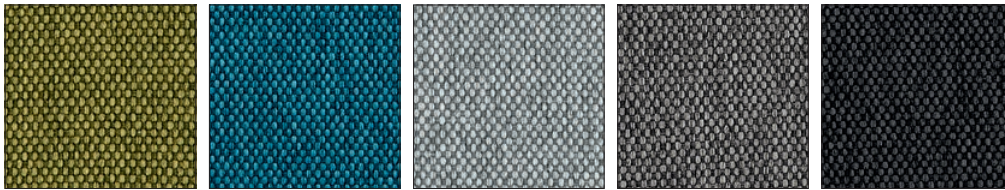
**1S0V**  
ARANCIONE

**1SA2**  
ECRU

**1SA3**  
SABBIA

**1SA4**  
ARGILLA

**1SA6**  
TORTORA




**1SA7**  
VERDE

**1SA8**  
BLU

**1SB0**  
CERULEO

**1SB1**  
GRIGIO

**1SB2**  
FUMO

VENICE | 100% PL gr/m<sup>2</sup> 430 | Martindale >100.000 cicli/rubs - EN ISO 12947-2 



**S0F**  
SABBIA

**S0G**  
TERRA

**S0H**  
BOSCO

**S0J**  
OCEANO

**S0K**  
MATTONE

**S0L**  
CENERE

**S0U**  
ROSA



**S0Y**  
NERO

**S0Z**  
CANAPA

**SVX**  
GHIACCIO

**SVY**  
BEIGE

**SVZ**  
VERDE

**SWA**  
GRIGIO CHIARO

**SWB**  
SENAPE



**SWC**  
CIPRIA

**SWD**  
AMBRA

**SWE**  
BLU

 PROGRAMMA MADE TO ORDER - CATEGORIA A

VINTAGE | 55% PU - 29% CO - 16% PL gr/m<sup>2</sup> 393 | Martindale >100.000 cicli/rubs - EN ISO 5470-2 Met.1



**S0A**  
DESERTO

**S0B**  
TABACCO

**S0C**  
EBANO

**S0W**  
CENERE

**S0X**  
CANAPA

 PROGRAMMA MADE TO ORDER - CATEGORIA B

BERGEN | 100% PL gr/m<sup>2</sup> 569 | Martindale >100.000 cicli/rubs - EN ISO 12947-2



**S2M**  
OTTANIO

**S2N**  
TERRA

**S2P**  
CENERE

**S2Q**  
TERRACOTTA

**S2R**  
SABBIA



**S2S**  
ECRU

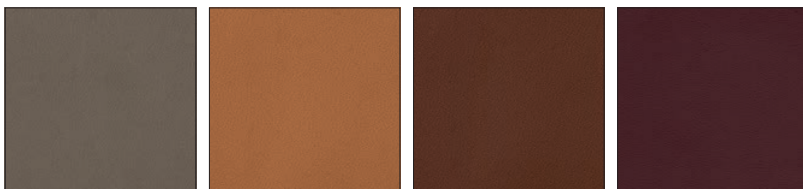
**S2T**  
ROSSO

**S2U**  
ROSA

**S2V**  
SENAPE

**S2W**  
VERDE

SOFTER | 75% PVC - 22% PL - 3% PU gr/m<sup>2</sup> 680 | Martindale >100.000 cicli/rubs - EN ISO 12947-2




**SLR**  
FANGO

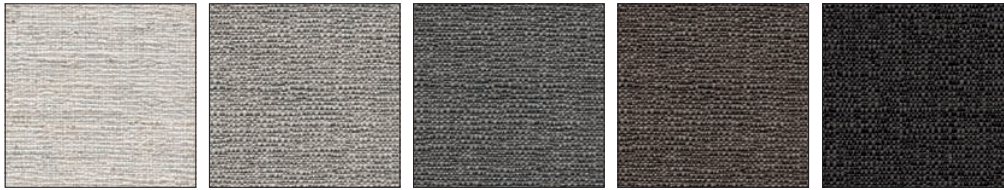
**SLS**  
COGNAC

**SLT**  
TABACCO

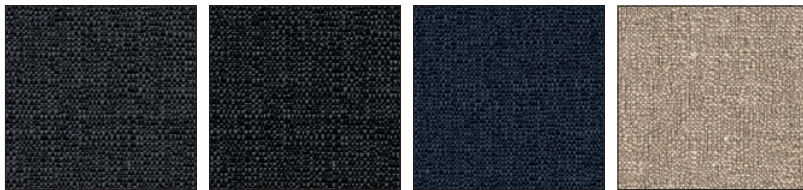
**SLU**  
BORGOGNA

 PROGRAMMA MADE TO ORDER - CATEGORIA C



DENVER |  Teflon™ is a registered trademark of The Chemours Company FC LLC, used under license by Calligaris S.p.a.  
41% VI - 21% PL - 18% LI - 15% CO - 4% PC - 1% AF gr/m<sup>2</sup> 327 | Martindale 20.000 cicli/rubs - EN ISO 12947-2

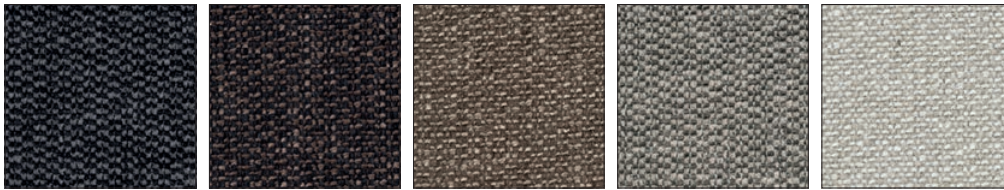


**A02** SABBIA      **A03** CORDA      **A04** TORTORA      **A05** ARGILLA      **A06** CAFFÈ

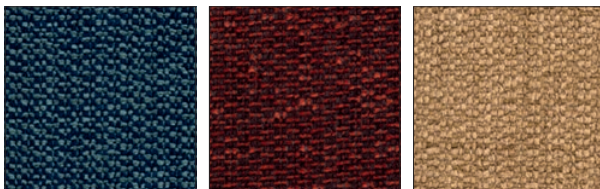


**A07** FUMO      **A08** ANTRACITE      **A09** BLU      **A0B** AVANA

MALMO |   79% PL - 16% CO - 5% PC gr/m<sup>2</sup> 442 | Martindale >40.000 cicli/rubs - EN ISO 12947-2



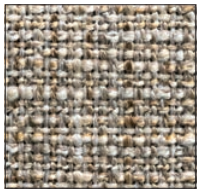
**SQ1** ANTRACITE      **SQ2** CAFFÈ      **SQ3** CORDA      **SQ4** TORTORA      **SQ5** SABBIA



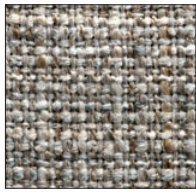
**SQ6** ACQUAMARINA      **SQ7** ROSSO      **SQ8** SENAPE

 PROGRAMMA MADE TO ORDER - CATEGORIA D

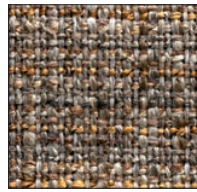
KALIX | 54% PC - 46% PL gr/m<sup>2</sup> 440 | Martindale 40.000 cicli/rubs - EN ISO 12947-2



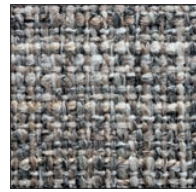
**S8P**  
ECRU



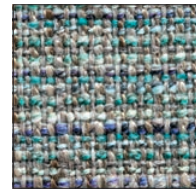
**S8Q**  
SABBIA



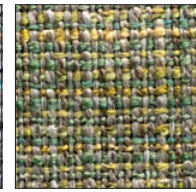
**S8R**  
MARRONE



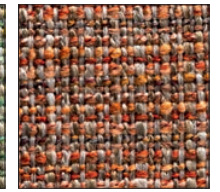
**S8S**  
GRIGIO



**S8T**  
BLU



**S8U**  
VERDE

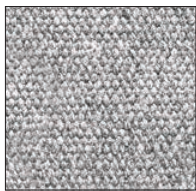


**S8V**  
ROSSO

REGEN | 75% CO - 25% PL gr/m<sup>2</sup> 510 | Martindale 50.000 cicli/rubs - EN ISO 12947-2



**SQZ**  
BEIGE



**SRA**  
GRIGIO CHIARO



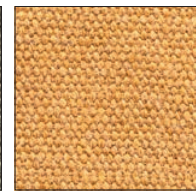
**SRB**  
MARRONE



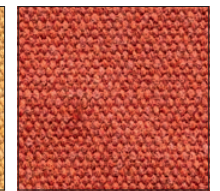
**SRC**  
ANTRACITE



**SRD**  
VERDE



**SRE**  
GIALLO



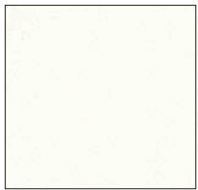
**SRF**  
ARANCIO

SKUBA | 84% PVC - 10% PL - 6% PU gr/m<sup>2</sup> 700 | Martindale >100.000 cicli/rubs - EN ISO 5470-2 Met.1

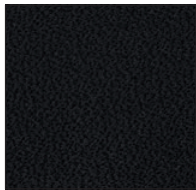


\*

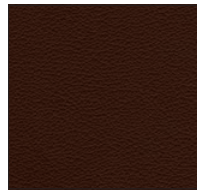
Pulire utilizzando solo acqua tiepida e sapone neutro.



**S92**  
BIANCO OTTICO



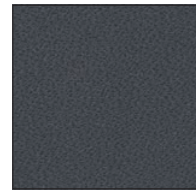
**S93**  
NERO



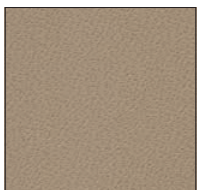
**S94**  
MOKA



**S95**  
TORTORA



**S96**  
GRIGIO



**S98**  
NOCCIOLA



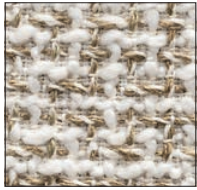
**S99**  
SENAPE



**SA0**  
SKY BLUE

 PROGRAMMA MADE TO ORDER - CATEGORIA E

**BOUCLÉ** | 37% PL - 21% PC - 19% VI - 14% CO - 8% LI - 1% PA gr/m<sup>2</sup> 522 | Martindale 40.000 cicli/rubs - EN ISO 12947-2



**SLV**  
CANAPA



**SLW**  
ANTRACITE

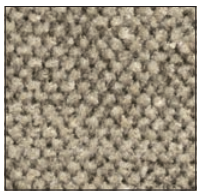


**SLX**  
TORTORA

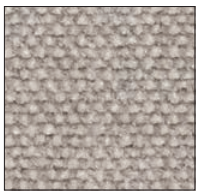


**SSQ**  
MATTONE

**CULLINAN** | 40% VI - 35% CO - 25% PC gr/m<sup>2</sup> 600 | Martindale 30.000 cicli/rubs - EN ISO 12947-2



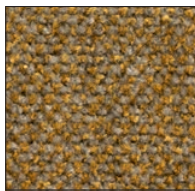
**ST8**  
ECRU



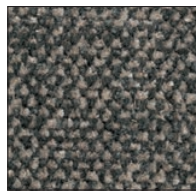
**ST9**  
BIANCO



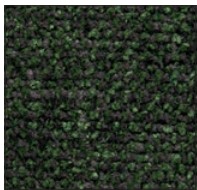
**SU0**  
MARRONE



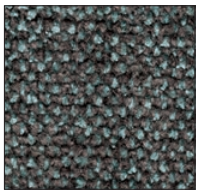
**SU1**  
GIALLO



**SU2**  
GRIGIO



**SU3**  
VERDE



**SU4**  
BLU



**SU5**  
ROSA

**MOGOL** | 87% PL - 13% LI gr/m<sup>2</sup> 436 | Martindale >95.000 cicli/rubs - EN ISO 12947-2



**S5J**  
BIANCO



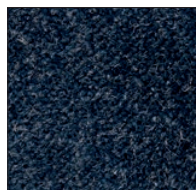
**S5K**  
ECRU



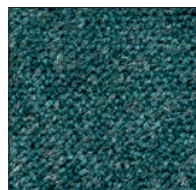
**S5L**  
MARRONE



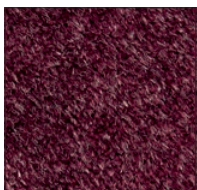
**S5M**  
ANTRACITE



**S5N**  
BLU



**S5P**  
ACQUAMARINA



**S5Q**  
BORDEAUX



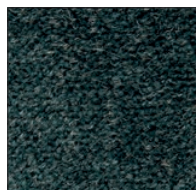
**S5R**  
ROSA



**S5S**  
GIALLO



**S5T**  
VERDE



**S5U**  
BOSCO

 PROGRAMMA MADE TO ORDER - CATEGORIA E

PARIS | 47% PC - 22% PL - 20% CO - 11% VI gr/m<sup>2</sup> 714 | Martindale 40.000 cicli/rubs - EN ISO 12947-2



**SQM**  
CREMA



**SQN**  
BEIGE



**SQP**  
MARRONE



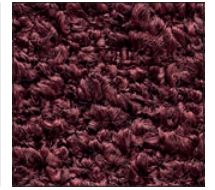
**SQQ**  
GRIGIO CHIARO



**SQR**  
TORTORA



**SQS**  
ANTRACITE



**SQT**  
BORDEAUX



**SQU**  
BLU



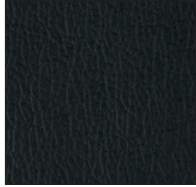
## PROGRAMMA MADE TO ORDER - CATEGORIA F

### PELLE ESPRIT

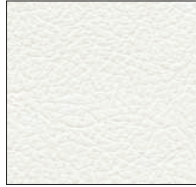
La pelle utilizzata da Calligaris si ottiene dalla parte più nobile del pellame (il fiore) di bovino europeo tagliato in spessori variabili secondo le esigenze e sottoposto a concia. La finitura esterna è ottenuta con pigmenti a base d'acqua.



**470**  
CAFFÈ



**683**  
NERO



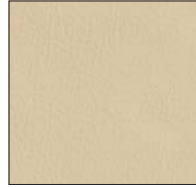
**705**  
BIANCO OTTICO



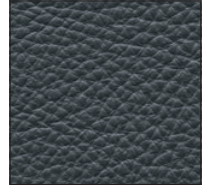
**D04**  
TORTORA



**L01**  
ANTILOPE



**L08**  
CREMA



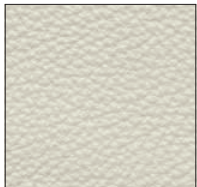
**L16**  
GRIGIO



## PROGRAMMA MADE TO ORDER - CATEGORIA G

### PELLE EMOTION STANDARD

Pelle bovina mezzo fiore a grana naturale di spessore finito 1,2 - 1,4 mm. Tintura passante; rifinitura con pigmenti e resine. Articolo con mano morbida, tatto ceroso e aspetto semiopaco.



**L1A**  
ZINC



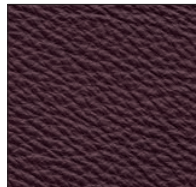
**L1L**  
BUCKSKIN



**L1U**  
HEZELNUT



**L2V**  
SIAM



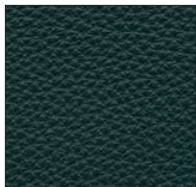
**L3A**  
AUBERGINE



**L3E**  
JASPER



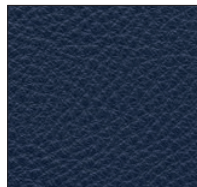
**L3Q**  
EBONY



**L4F**  
BOTTLE



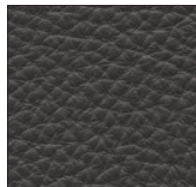
**L4J**  
PACIFIC



**L4L**  
INDIGO



**L5G**  
GRAYSTONE



**L5H**  
GRAYSHADOW

**PELLE EMOTION EXTENDED**

Pelle bovina mezzo fiore a grana naturale di spessore finito 1,2 - 1,4 mm. Tintura passante; rifinitura con pigmenti e resine. Articolo con mano morbida, tatto ceroso e aspetto semiopaco.



**L1B**  
PENICILLIN

**L1C**  
PAPYRUS

**L1D**  
SOUL WHITE

**L1E**  
PORCELAIN

**L1F**  
IVORY

**L1G**  
SAND

**L1H**  
DESERTSTORM



**L1J**  
CAFFELLATTE

**L1K**  
MOUTON

**L1M**  
CLAY

**L1N**  
AVANA

**L1P**  
TAN

**L1Q**  
LION

**L1R**  
CINNEMON



**L1S**  
SWAMP

**L1T**  
COTTO

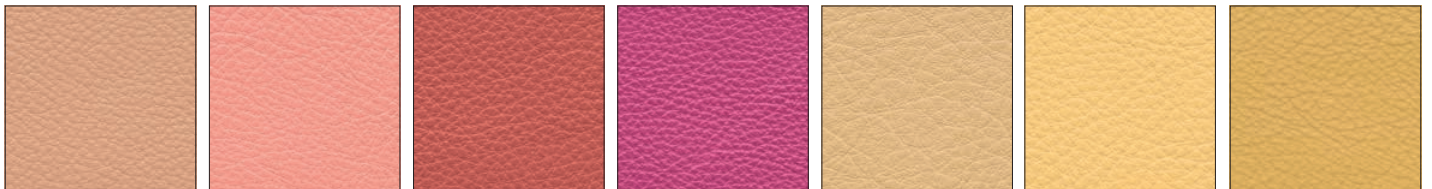
**L1V**  
ECUREIL

**L1W**  
BRAUN

**L1X**  
DASH

**L1Y**  
MARBLE

**L1Z**  
PILL



**L2A**  
CORIANDER

**L2B**  
FACEPOWDER

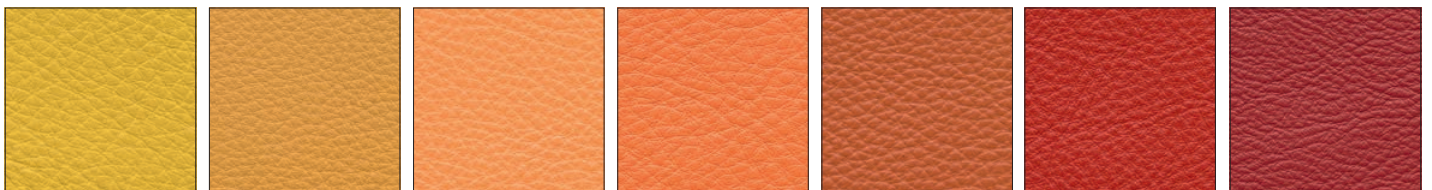
**L2C**  
FOND-DE-TEIN

**L2D**  
ENERGY

**L2E**  
LIGHT

**L2F**  
CIQUITA

**L2G**  
PERGAMENA



**L2H**  
LEMON GRASS

**L2J**  
CARIOCA

**L2K**  
PEACH

**L2L**  
SUNSET

**L2M**  
CLAW

**L2N**  
REDORANGE

**L2P**  
BEGONIA



**L2Q**  
POT-PURRY

**L2R**  
HENNA

**L2S**  
BLOOD

**L2T**  
ANTIQUE

**L2U**  
PARROT

**L2W**  
PHONEBOX

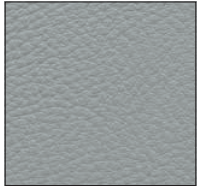
**L2X**  
BOMBAY







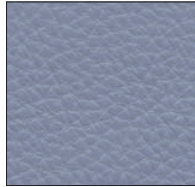
## PROGRAMMA MADE TO ORDER - CATEGORIA H



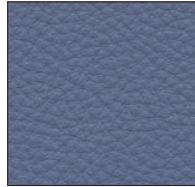
**L4Y**  
CIMENT



**L4Z**  
WISTERIA



**L5A**  
MILKA



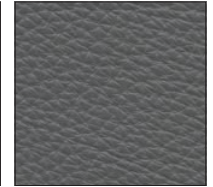
**L5B**  
LAVANDER



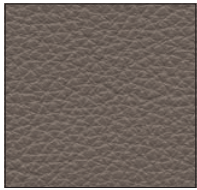
**L5C**  
TURTLEDOVE



**L5D**  
SMOKE



**L5E**  
IRON



**L5F**  
GREY



**L5J**  
BLACK INK



Modello certificato Forest Stewardship Council®  
Forest Stewardship Council® certified Model

Richiedi i prodotti certificati FSC®  
Ask for FSC® certified products

COMPANY WITH  
MANAGEMENT SYSTEM  
CERTIFIED BY DNV  
ISO 9001 • ISO 14001

Tutte le confezioni dei prodotti di Calligaris S.p.A. contengono la "Scheda prodotto" che ottempera alle disposizioni del D.L. 206 / 2005 "CODICE DEL CONSUMO" e al decreto del 08 febbraio 1997 n. 101 "Regolamento d'attuazione".  
Il presente listino ha carattere puramente illustrativo. Calligaris S.p.A. declina ogni responsabilità per eventuali non conformità di colori delle finiture dei materiali utilizzati. Caratteristiche e dimensioni di tutti i prodotti sono soggetti a variazioni senza preavviso e non sono impegnative per la Calligaris S.p.A..  
I marchi e i segni distintivi riportati nel presente listino sono validamente registrati e di esclusiva proprietà della Calligaris S.p.a. Il rivenditore si obbliga a utilizzare correttamente il materiale promozionale e pubblicitario fornito dalla Calligaris S.p.a., senza, in alcun modo, ledere i marchi e i segni distintivi in esso riportati.