

Upholstery Collections

CATEGORIA H FUORI PRODUZIONE

PEDRALI

Material for upholstery and cushions

Rivestimenti per imbottiture e cuscini

Legend

Legenda

CARD	FABRIC	FIRE RETARDANT FABRIC	OUTDOOR FABRIC	GENUINE HARD LEATHER	REGENERATED HARD LEATHER	SMIL LEATHER	FIRE RETARDANT SMIL LEATHER	VELVET	FIRE RETARDANT VELVET
Category A	09	●	●	●	●	●	●	●	●
Category B	07	●	●	●	●	●	●	●	●
Category C	04, 05, 07, 10, 11	●	●	●	●	●	●	●	●
Category D	05, 07	●	●	●	●	●	●	●	●
Category E	08	●	●	●	●	●	●	●	●
Category F	13	●	●	●	●	●	●	●	●
Category G	01, 02, 03, 04, 06, 08	●	●	●	●	●	●	●	●
Category H	05, 08, 09	●	●	●	●	●	●	●	●
Category N	03, 08	●	●	●	●	●	●	●	●
Category P	12	●	●	●	●	●	●	●	●



Fire-retardant
Ignifugo



Outdoor use
Adatto per uso esterno

washing / lavaggio

drying / asciugatura



Do not wash
Lavaggio a secco



Do not tumble dry
Non asciugare in asciugatrice



Hand wash
Lavaggio a mano



Dry flat
Asciugare disteso



Wash at max 30°C normal
Lavaggio normale, max 30°C

ironing / stiratura



Wash at max 30°C mild
Lavaggio delicato, max 30°C



Do not iron
Non stirare



Wash at max 40°C normal
Lavaggio normale, max 40°C



Iron at low temperature
Stirare a bassa temperatura



Wash at max 60°C mild
Lavaggio delicato, max 60°C



Iron at medium temperature
Stirare a media temperatura

dry cleaning / lavaggio a secco

bleaching / candeggiare



Do not dry clean
Lavaggio a secco non consentito



Do not bleach
Non candeggiare



Dry clean, perchlorethylene (PCE)
Lavaggio a secco con percloroetilene (PCE)



Any bleaching agent allowed
Candeggiare consentito



Gentle dry cleaning with PCE
Lavaggio a secco delicato con PCE



Compliant to Ecolabel UE
environmental requirements
Conforme ai requisiti ambientali Ecolabel UE



96/98/CE - 2010/68/UE
EU marine equipment rules compliant
Conforme ai requisiti europei per equipaggiamenti marittimi

Fabrics

Tessuti

Category G

PEDRALI®

G



	G59÷G69 G190÷G197	G70÷G78	G140÷G146
COMPOSITION COMPOSIZIONE	90% New wool 10% Nylon	90% New wool 10% Nylon	45% Recycled wool 45% New wool 10% Nylon
ABRASION ABRASIONE	100.000 cycles Martindale (DS/EN ISO 12947-2:2016)	80.000 cycles Martindale (DS/EN ISO 12947-2:2016)	50.000 cycles Martindale (DS/EN ISO 12947-2:2016)
RUBBING FASTNESS SOLIDITÀ ALLO SFREGAMENTO	/	/	Dry and Wet 4-5, scale 1-5 (ISO 105-X12)
PILLING	4, scale 1-5 (EN ISO 12945)	3-4, scale 1-5 (EN ISO 12945)	4, scale 1-5 (EN ISO 12945)
LIGHT FASTNESS SOLIDITÀ ALLA LUCE	5-7, scale 1-8 (EN ISO 105-B02)	5-7, scale 1-8 (ISO 105-B02)	5-7, scale 1-8 (ISO 105-B02:2014)
SOUND ABSORPTION ASSORBIMENTO ACUSTICO	folded: $\alpha_w=0.95$ Class A (ISO 11654)	folded: $\alpha_w=0.80$ Class B (ISO 11654)	folded: $\alpha_w=0.75$ Class C (ISO 11654)
FLAME RESISTANCE RESISTENZA AL FUOCO	AS/NZS 1530.3 AS/NZS 3837 Class 2 BS 5852 Part 1 BS 5852 Crib 5 with treatment DIN 4102 B2 EN 1021 - 1/2 IMO FTP Code 2010: Part 8 NF D60-013 NFPA 260 ÖNORM B1/Q1 SN 198 898 5.3 with treatment UNI 9175 Classe 1 IM US CA TB 117-2013	AS/NZS 1530.3 AS/NZS 3837 Class 2 BS 5852 Part 1 BS 5852 Crib 5 with treatment DIN 4102 B2 EN 1021 - 1/2 IMO FTP Code 2010: Part 8 NF D60-013 NFPA 260 ÖNORM B1/Q1 SN 198 898 5.3 with treatment UNI 9175 Classe 1 IM US CA TB 117-2013	AS/NZS 1530.3 BS 5852 Part 1 BS 5852 Crib 5 with treatment BS 5852 IGNITION SOURCE 3 EN 1021 - 1/2 IMO FTP Code 2010: Part 8 NF D60-013 ÖNORM B1/Q1 UNI 9175 Classe 1IM US CA TB 117-2013
APPROVED OMOLOGATO	 	 	 
CLEANING LAVAGGIO	    	    	    



G

Collection / Collezione

• kvadrat

STEELCUT TRIO 3:

G59, from G62 to G67, G69
from G190 to G197

STEELCUT TRIO 2:

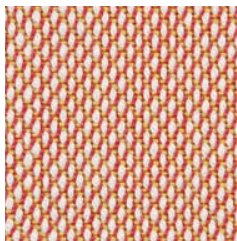
G60, G61, G68

STEELCUT 2:

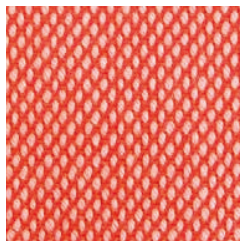
from G70 to G78

DESIGNERS Dijkmeijer & Ridolfo

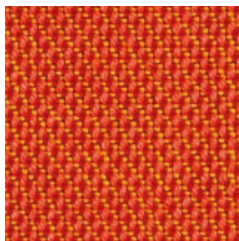
G 59



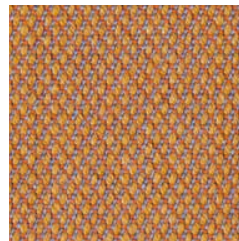
G192



G 69



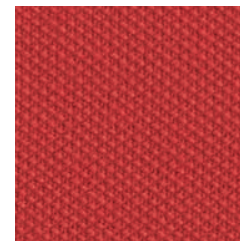
G 190



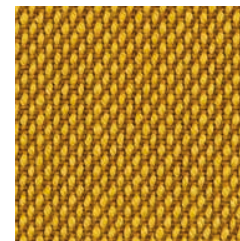
G 191



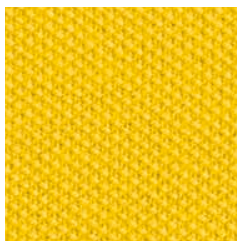
G 72



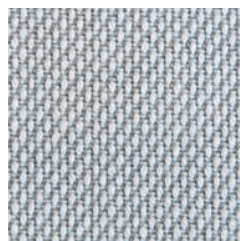
G 67



G 78



G 193



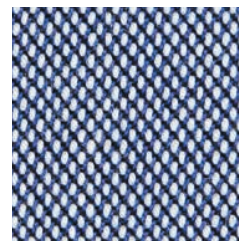
G 194



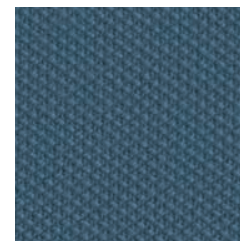
G 195



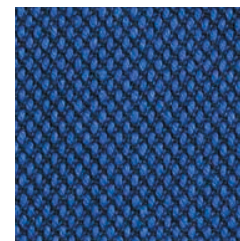
G 196



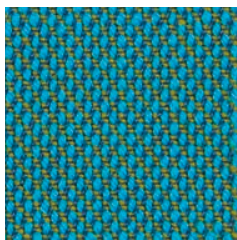
G 75



G 197



G 68



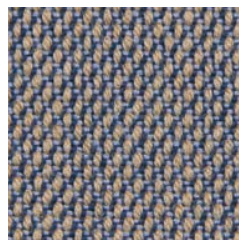
G 66



G 71



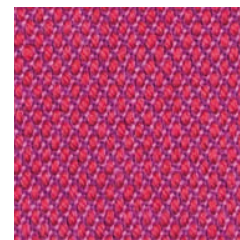
G 64



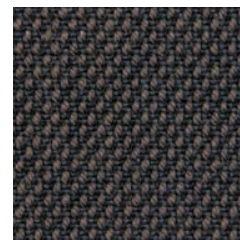
G 61



G 60



G 65



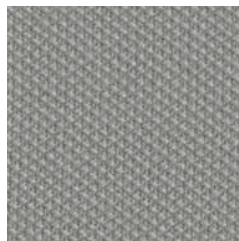
G 74



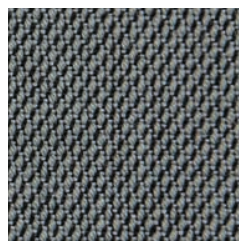
G 63



G 73



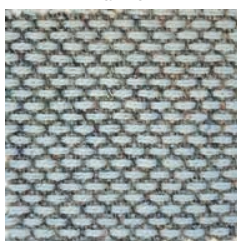
G 62



G 70



G 143



G 145



G 144



G 146



G 140



G 141



G 142



Collection / Collezione

• kvadrat

RE-WOOL

from G140 to G146

DESIGNER Margrethe Odgaard

Fabrics

Tessuti

Category G

PEDRALI®

G

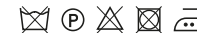
G110+G116 | G21+G25

COMPOSITION COMPOSIZIONE	100% New wool
ABRASION ABRASIONE	45.000 cycles Martindale (EN ISO 12947)
PILLING	3, scale 1-5 (EN ISO 12945)
LIGHT FASTNESS SOLIDITÀ ALLA LUCE	5-7, scale 1-8 (ISO 105-B02)
SOUND ABSORPTION ASSORBIMENTO ACUSTICO	folded: $\alpha_w = 0.70$ Class C (ISO 11654)
FLAME RESISTANCE RESISTENZA AL FUOCO	AS/NZS 1530.3 BS 5852 Crib 5 BS 5852 Part 1 BS 5867 part 2 type B (only for G23, G24) DIN 4102 B2 EN 1021-1/2 EN 13501, C-s1, d0, glued IMO FTP Code 2010: Part 8 NFPA 260 NFPA 260 ÖNORM B1/Q1 SN 198 898 5.3 with treatment UNI 9175 Classe 1 IM US CA TB 117-2013

APPROVED
OMOLOGATO



CLEANING
LAVAGGIO



G160+G169

COMPOSITION COMPOSIZIONE	96% New wool 4% Nylon
ABRASION ABRASIONE	45.000 cycles Martindale (EN ISO 12947)
PILLING	3-4, scale 1-5 (EN ISO 12945)
LIGHT FASTNESS SOLIDITÀ ALLA LUCE	5-6, scale 1-8 (ISO 105-B02)
SOUND ABSORPTION ASSORBIMENTO ACUSTICO	folded: $\alpha_w = 0.75$ Class C (ISO 11654)
FLAME RESISTANCE RESISTENZA AL FUOCO	AS/NZS 3837 Class 2 BS 5852 Crib 5 with treatment BS 5852 Part 1 DIN 4102 B2 EN 1021 - 1/2 IMO FTP Code 2010: Part 8 NFPA 260 NFPA 260 SN 198 898 5.3 with treatment UNI 9175 Classe 1 IM US CA TB 117-2013



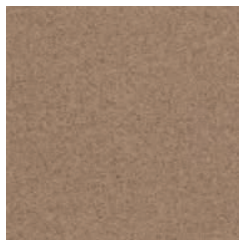


G

G 24



G 114



G 115



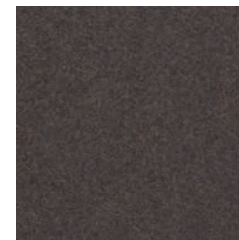
G 113



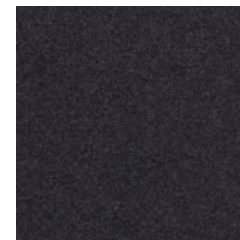
G 111



G 116



G 110



Collection / Collezione

• kvadrat

DIVINA MELANGE 2:

G21, G22 and G25

DIVINA MELANGE 3:

G23 and G24

DIVINA MD:

from G110 to G116

DESIGNER Finn Skødt

G 112



G 21



G 25



G 22



G 23



Collection / Collezione

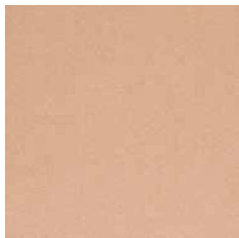
• kvadrat

HERO

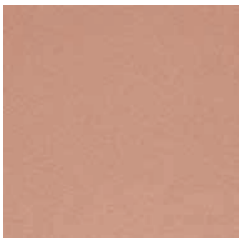
from G160 to G169

DESIGNER Patricia Urquiola

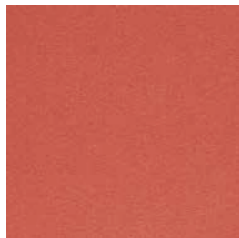
G 163



G 160



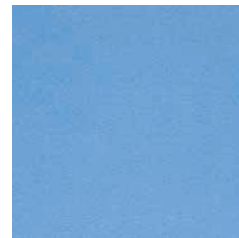
G 161



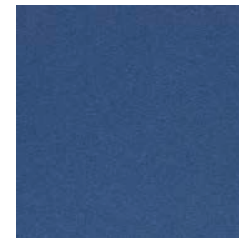
G 162



G 165



G 166



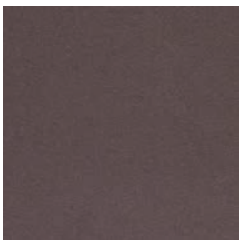
G 167



G 168



G 164



G 169



Fabrics

Tessuti

Category G | N

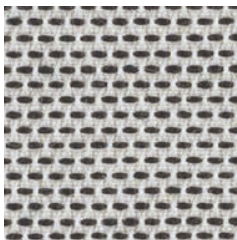
PEDRALI®

	G 		N 
	G100÷G102	G120÷G122	N01÷N05
COMPOSITION COMPOSIZIONE	90% New wool 10% Nylon	100% New wool	58% New wool 25% Viscose 8% Linen 5% Polyamide 4% Polyester
ABRASION ABRASIONE	50.000 cycles Martindale (EN ISO 12947-2:1998)	75-100.000 cycles Martindale (EN ISO 12947-2:1998)	50.000 cycles Martindale (EN ISO 12947)
PILLING	4, scale 1-5 (EN ISO 12945)	3-4, scale 1-5 (EN ISO 12945)	3, scale 1-5 (EN ISO 12945)
LIGHT FASTNESS SOLIDITÀ ALLA LUCE	6-7, scale 1-8 (ISO 105-B02)	6-7, scale 1-8 (ISO 105-B02)	5-7, scale 1-8 (ISO 105-B02)
FLAME RESISTANCE RESISTENZA AL FUOCO	AS/NZS 3837 Class 2 BS 5852 Part 1 BS 5852 Crib 5 with treatment DIN 4102 B2 EN 1021 - 1/2 IMO FTP Code 2010: Part 8 NFPA 260 NF D60-013 ÖNORM B1/Q1 SN 198 898 5.3 with treatment UNI 9175 Classe 1 IM US CA TB 117-2013	BS 5852 Part 1 BS 5852 Crib 5 with treatment DIN 4102 B2 EN 1021 - 1/2 IMO FTP Code 2010: Part 8 NFPA 260 NF D60-013 ÖNORM B1/Q1 UNI 9175/UNI 9176 Classe 1 IM US CA TB 117-2013	AS/NZS 3837, class 2 BS 5852 Part 1 BS 5852 Crib 5 with treatment DIN 4102 B2 EN 1021 - 1/2 NFPA 260 US CA TB 117-2013
APPROVED OMOLOGATO	 	 	
CLEANING LAVAGGIO			

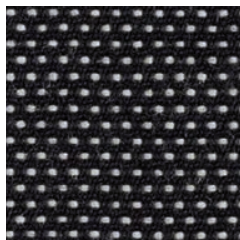


G

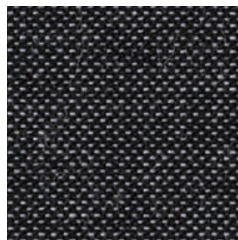
G 101



G 100



G 102



Collection / Collezione

• **kvadrat**

BASEL

from G100 to G102

DESIGNERS Herzog & de Meuron

G 120



G 121



G 122



Collection / Collezione

• **kvadrat**

MOLLY 2

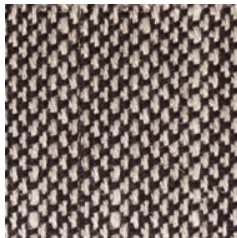
from G120 to G122

DESIGNER Åsa Pärson



N

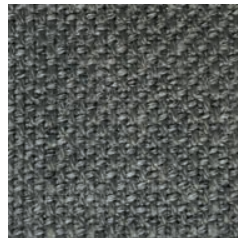
N 05



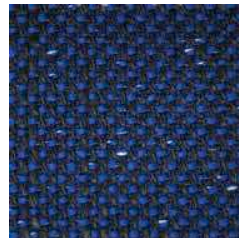
N 01



N 02



N 03



N 04



Collection / Collezione

• **kvadrat**

SUNNIVA 2

from N01 to N05

DESIGNERS

Raf Simons & Fanny Aronsen

Fabrics

Tessuti

Category C | G

PEDRALI®

FABRICS / TESSUTI

C 

C110÷C122

COMPOSITION
COMPOSIZIONE

85% Wool
15% Polyamide

ABRASION
ABRASIONE

100.000 cycles
Martindale (EN ISO 12947-2)

RUBBING FASTNESS
SOLIDITÀ ALLO SFREGAMENTO

Dry 4 and Wet 3-4, scale 1-5
(EN ISO 105-X12)

LIGHT FASTNESS
SOLIDITÀ ALLA LUCE

5-7, scale 1-8
(EN ISO 105-B02)

FLAME RESISTANCE
RESISTENZA AL FUOCO

BS 5852 Crib 5
EN ISO 1021 Part 1&2
IMO FTP Code 2010: Part 8
UNI 9175 e UNI 9175/FA1 Classe 1 IM

APPROVED
OMOLOGATO



CLEANING
LAVAGGIO



G 

G150÷G156

82% Wool
12% Rami
6% Polyamide

100.000 cycles
Martindale (EN ISO 12947-2)

Dry 4 and Wet 3-4, scale 1-5
(EN ISO 105-X12)

5-7, scale 1-8
(EN ISO 105-B02)

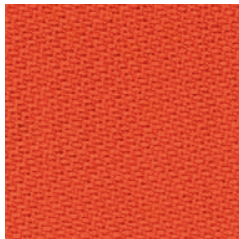
BS 5852 Crib 5
EN ISO 1021 Part 1&2
IMO FTP Code 2010: Part 8
UNI 9175 Classe 1 IM
US CA TB 117-2013



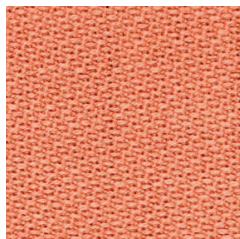


C

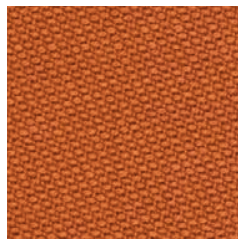
C110



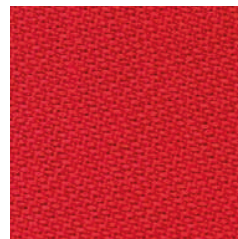
C111



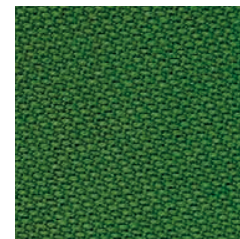
C112



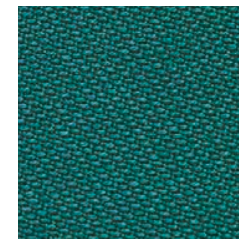
C113



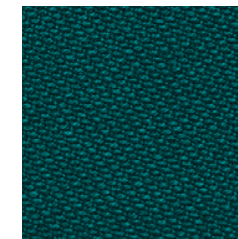
C117



C118



C119



Collection / Collezione

• **svensson**

SEMI

from C110 to C122

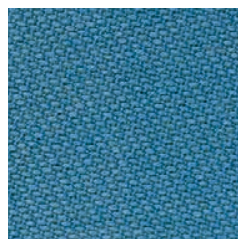
C115



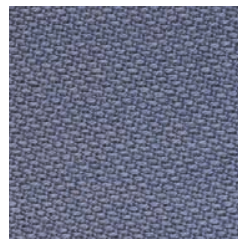
C116



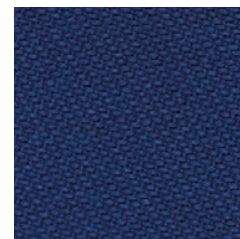
C120



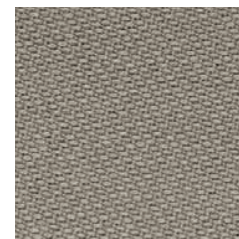
C121



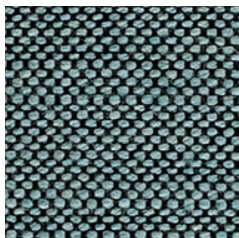
C122



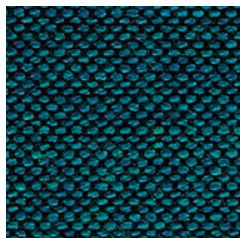
C114



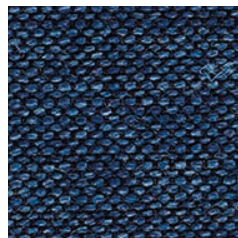
G 154



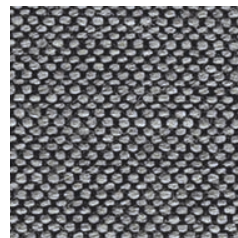
G 155



G 156



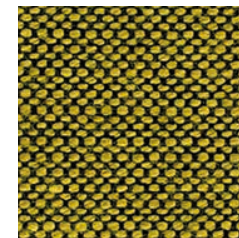
G 151



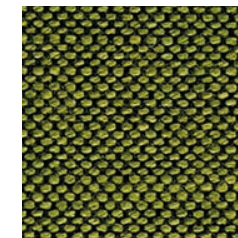
G 150



G 152



G 153



G

Collection / Collezione

• **svensson**

BALANCE

from G150 to G156


Fabrics

Tessuti

Category C | D | H

PEDRALI®

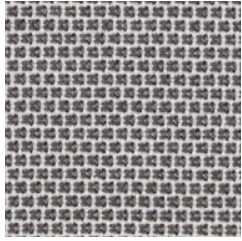
FABRICS / TESSUTI

	C 	D 	H 
	C83÷C89 C100, C101	D40÷D44	H60÷H64
COMPOSITION COMPOSIZIONE	54% New Zealand Wool 44% Post-consumer recycled, polyester 2% Polyamide	88% New Zealand Wool 12% Polyamide	92% New Zealand Wool 8% Polyamide
ABRASION ABRASIONE	100.000 cycles Martindale (EN ISO 12947-2)	100.000 cycles Martindale (EN ISO 12947-2)	200.000 cycles Martindale (EN ISO 12947-2)
RUBBING FASTNESS SOLIDITÀ ALLO SFREGAMENTO	Dry and Wet 4-5, scale 1-5 (EN ISO 105-X12:1995)	Dry and Wet 4-5, scale 1-5 (EN ISO 105-X12)	Dry and Wet 4-5, scale 1-5 (EN ISO 105-X12)
PILLING	4-5, scale 1-5 (EN ISO 12945-2)	4-5, scale 1-5 (EN ISO 12945-2)	4, scale 1-5 (EN ISO 12945-2)
LIGHT FASTNESS SOLIDITÀ ALLA LUCE	5-7, scale 1-8 (EN ISO 105-B02)	5-7, scale 1-8 (EN ISO 105-B02)	5-7, scale 1-8 (EN ISO 105-B02)
FLAME RESISTANCE RESISTENZA AL FUOCO	BS EN 1021 1&2 BS EN 1021-1 BS 5852 Part 1 0, 1 US CA TB 117-2013	BS EN 1021 1&2 BS 5852 Part 1 0, 1 UNI 9175 Classe 1 IM US CA TB 117-2013	BS EN 1021 1&2 BS EN 1021-1 BS 5852 Part 1 0, 1 UNI 9175 Classe 1 IM US CA TB 117-2013
APPROVED OMOLOGATO			
CLEANING LAVAGGIO			

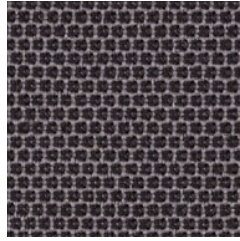


C

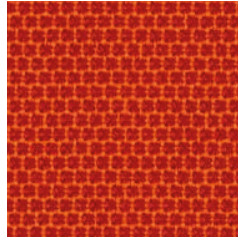
C 101



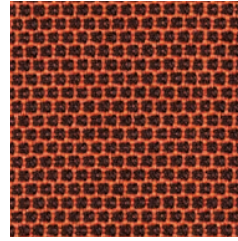
C 86



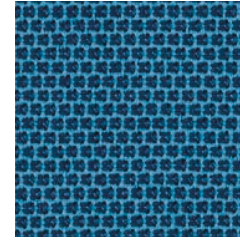
C 85



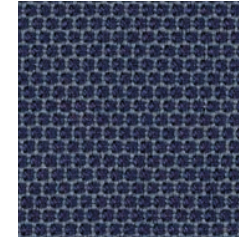
C 89



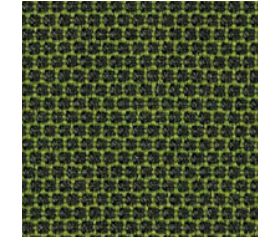
C 83



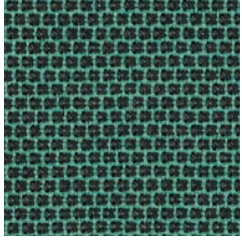
C 100



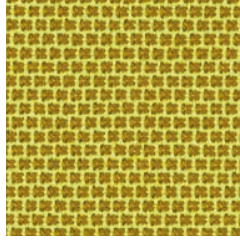
C 84



C 88

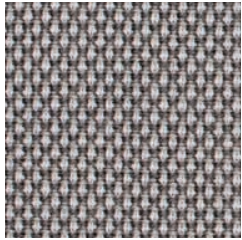


C 87

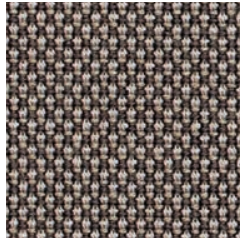


D

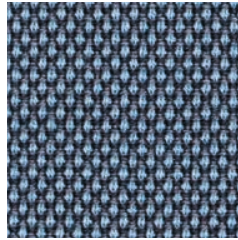
D 40



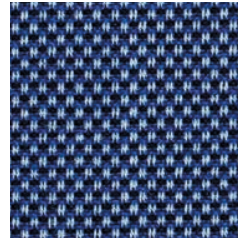
D 41



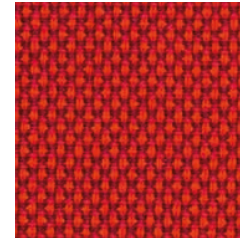
D 43



D 44



D 42



H

H 62



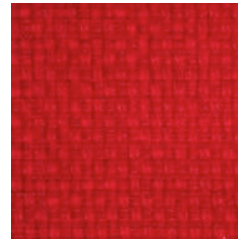
H 63



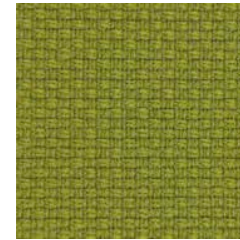
H 60



H 61



H 64



Fabrics

Tessuti

Category G

PEDRALI®

G 

G130+G133

COMPOSITION
COMPOSIZIONE

95% Virgin Wool
5% Polyamide

ABRASION
ABRASIONE

52.000 cycles
Martindale (DIN EN ISO 12947-2)

PILLING

4-5, scale 1-5
(EN ISO 12945-2)

LIGHT FASTNESS
SOLIDITÀ ALLA LUCE

5-8, scale 1-8
(EN ISO 105-B02)

SOUND ABSORPTION
ASSORBIMENTO ACUSTICO

folded: $\alpha_w = 0.85$
Class B (ISO 11654)

FLAME RESISTANCE
RESISTENZA AL FUOCO

BS 5852:1979 (Part 1)
BS 5852:2006 (Part 2) Crib 5
DIN 4102-1 B2
EN 1021 -1 and -2
EN 13501-1
FAR 25.853 (12 sec. vertical)
IMO: 2014/90/EU (MED)
UNI 9175 Classe 1 IM
US CA TB 117-2013

APPROVED
OMOLOGATO



CLEANING
LAVAGGIO



G170+G176

96% Virgin Wool
4% Polyamide

90.000 cycles
Martindale (DIN EN ISO 12947-2)

4-5, scale 1-5
(EN ISO 12945-2)

5-8, scale 1-8
(EN ISO 105-B02)

folded: $\alpha_w = 0.95$
Class A (ISO 11654)

BS 5852:1979 (Part 1)
BS 5852:2006 (Part 2) Crib 5
DIN 4102-1 B2
EN 13501-1
EN 1021 -1 and -2
FAR 25.853 (12 sec. vertical)
IMO: 2014/90/EU (MED)
US CA TB 117-2013



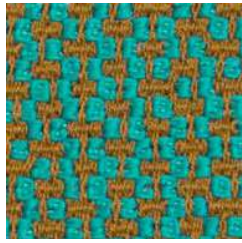


G

G 130



G 131



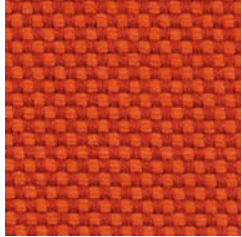
G 132



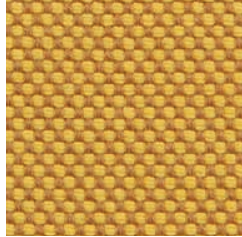
G 133



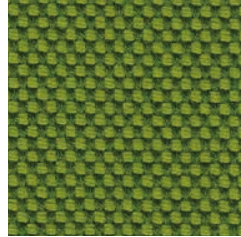
G 170



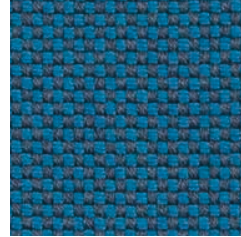
G 171



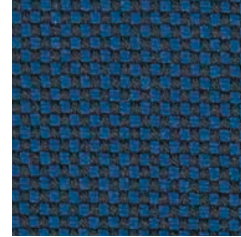
G 172



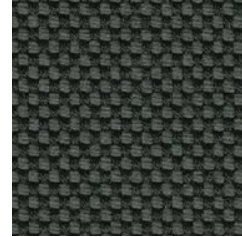
G 173



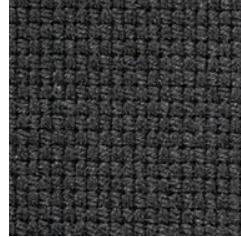
G 174



G 175



G 176









Fabrics

Tessuti

Category B | C | D 

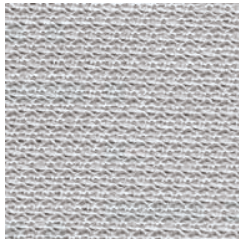
PEDRALI®

FABRICS / TESSUTI

	B	C	D 
	B01+B02	C36÷C39	D31÷D39
COMPOSITION COMPOSIZIONE	100% Nylon (Support film PVC)	94% Cotton 6% Polyamide	100% Acrylic teflon
ABRASION ABRASIONE	>50.000 cycles, Martindale (UNI EN ISO 12947:00)	40.000 cycles, Martindale (BS EN ISO 12947-2 1999)	10.000 cycles, Martindale (EN ISO 12947)
RUBBING FASTNESS SOLIDITÀ ALLO SFREGAMENTO	5, scale 1-5 (UNI EN ISO 105 X12:97)	Dry 4-5 and Wet 2-3, scale 1-5 (BS EN ISO 105-X12:1995)	/
PILLING	5, scale 1-5 (UNI EN ISO 12945-2:00)	4, scale 1-5 (BS EN ISO 12945-2:2001 to 5.000 cycles)	/
LIGHT FASTNESS SOLIDITÀ ALLA LUCE	5, scale 1-8 (UNI EN ISO 105-B02:01)	4-5 (light colours) 5 (medium-dark colours) (BS EN ISO 105-B02:2001)	7-8, scale 1-8 (EN ISO 105-B02)
CLEANING LAVAGGIO	   	   	    

B

B 01



B 02



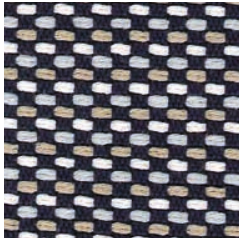
only for collection / solo per collezione



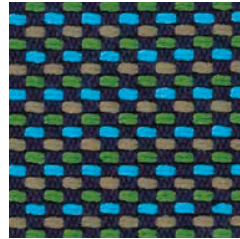
Island

C

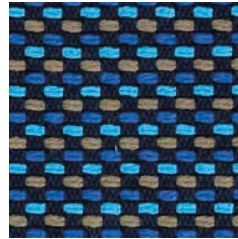
C 37



C 38



C 39

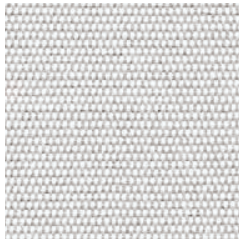


C 36

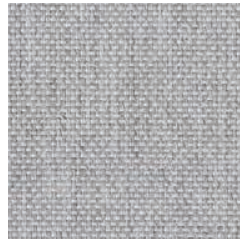


D

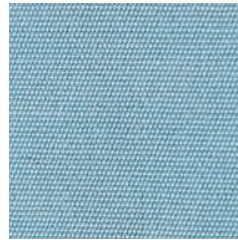
D 37



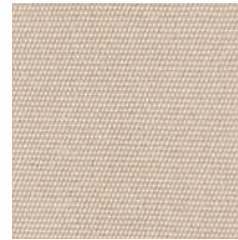
D 38



D 33



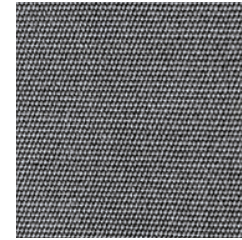
D 34



D 39



D 35



D 32



D 31



D 36



for cushions only for collections / solo per cuscino delle collezioni



Intrigo



Nolita



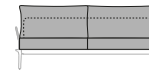
Plus



Plus Air



Pasha



Reva



Sunset

Only for Nolita cushions: rim available in colours D34, D35 and D36

Solo per cuscino Nolita: disponibile con bordino in diversi colori D34, D35 e D36

Velvet

Velluto

Category E | H | N | G

PEDRALI

VELVET / VELLUTO

	E	H 	N 	G 
	E01+E05	H40+H53	N20+N27	G180+G185
COMPOSITION COMPOSIZIONE	100% Cotton	100% TREVIRA CS®	100% Polyester FR	100% TREVIRA CS®
ABRASION ABRASIONE	50.000 cycles Martindale (ISO 12847-2)	190.000 cycles Martindale (EN ISO 12947-2)	100.000 cycles Martindale (EN ISO 12947)	50.000 cycles Martindale (EN ISO 12947)
RUBBING FASTNESS SOLIDITÀ ALLO SFREGAMENTO	Dry 4-5 and Wet 3-5, scale 1-5 (ISO 105-X12)	Dry and Wet 4-5, scale 1-5 (EN ISO 105-X12)	/	Dry and Wet 4-5, scale 1-5 (EN ISO 105-X12)
FILLING	/	5, scale 1-5 (EN ISO 12945-2)	4, scale 1-5 (EN ISO 12945-2)	4-5, scale 1-5 (EN ISO 12945)
LIGHT FASTNESS SOLIDITÀ ALLA LUCE	4-6, scale 1-8 (ISO 105-B02)	5, scale 1-8 (EN ISO 105-B02)	4-6, scale 1-8 (EN ISO 105-B02)	5-7, scale 1-8 (ISO 105-B02:2014)
SOUND ABSORPTION ASSORBIMENTO ACUSTICO	/	folded: $\alpha_w = 0.70$ (EN ISO 354:2003)	folded: $\alpha_w = 0.80$ Class B (ISO 11654)	folded: $\alpha_w = 0.85$ Class B (ISO 11654)
FLAME RESISTANCE RESISTENZA AL FUOCO	/	BS 5852 Part 0,1 DIN 4102 B1 EN 1021-1&2 IMO MSC 30788) Annex 1 Part 7-8 NF P 92-503-507 M1 NFPA 260-2019 UNI 9177 Classe 1 UNI 9175 Classe 1 IM US CA TB 117-2013	BS 5852 Crib 5 BS 5867 Part 2 Type B EN 1021-1/2 EN 13501, B-s1, d0 IMO FTP Code 2010: Part 8 ONORM B1/Q1 SN 198 898 S.2 UNI 9175 Classe 1 IM US CA TB 117-2013	BS 5852 Crib 5 BS 5852 Part 1 BS 5867 Part 2 Type B DIN 4102 B1 EN 1021-1/2 IMO FTP Code 2010: Part 8 NF 060-013 NF P92 57 M1 ONORM B1/Q1 SN 198 898 S.2 UNI 9175 Classe 1 IM US CA TB 117-2013
APPROVED OMOLOGATO	/	/		
CLEANING LAVAGGIO	   	   	   	   

E

E 04



E 03



E 05



E 02



E 01

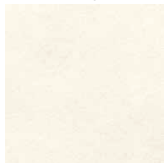


Collection / Collezione
• **DEDAR**
ADAMO & EVA
from E01 to E05



H

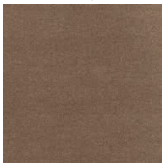
H 40



H 44



H 45



H 46



H 43



H 49



H 51



H 50



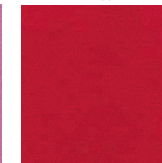
H 48



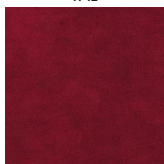
H 52



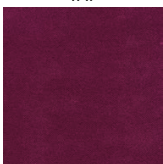
H 53



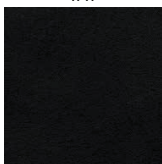
H 42



H 47

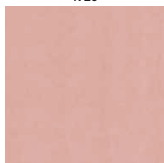


H 41

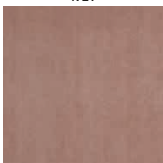


N

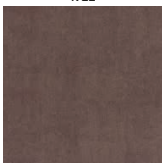
N 20



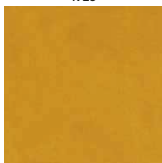
N 21



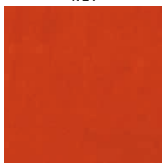
N 22



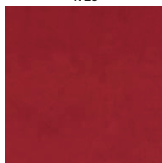
N 23



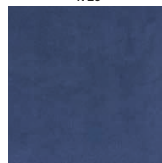
N 24



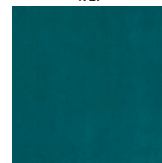
N 25



N 26



N 27



Collection / Collezione
• **kvadrat** - SAHCO
BALBOA
from N20 to N27
DESIGNER Najberg



G

G 180



G 182



G 181



G 185



G 183



G 184



Collection / Collezione
• **kvadrat**
STILL
from G180 to G185
DESIGNER Georgina Wright




Simil Leather

Finta Pelle

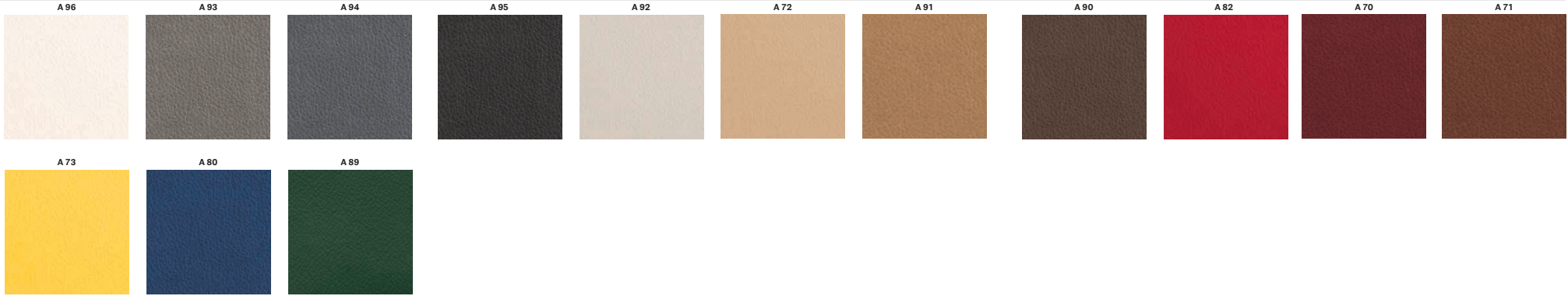
Category A | H

PEDRALI

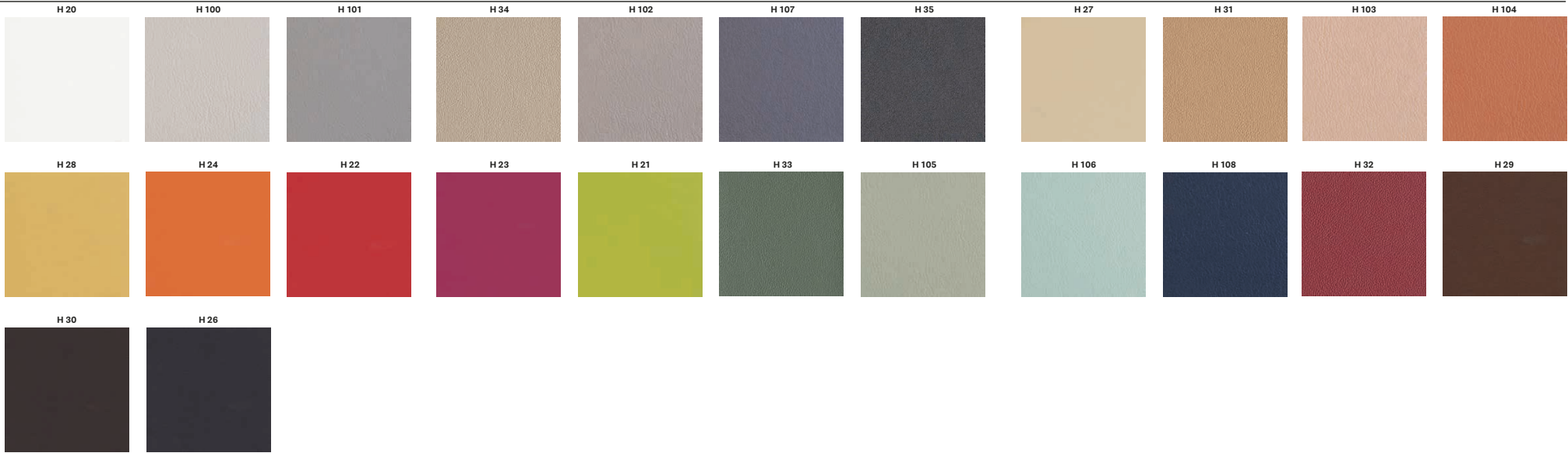
SIMIL LEATHER / FINTA PELLE

	A	H 
	A70+A73 A80, A82 A89+A96	H20+H24 H26+H35 H100+H108
COMPOSITION COMPOSIZIONE	85% PVC 15% Polyurethane	63% Polyurethane 29% Cotton 8% PES
ABRASION ABRASIONE	50,000 cycles Martindale (UNI EN ISO 12947-2)	150,000 cycles Martindale (UNI EN ISO 12947-2)
RUBBING FASTNESS SOLIDITÀ ALLO SFREGAMENTO	Dry and Wet 4-5, scale 1-5 (UNI EN ISO 105-X12)	/
LIGHT FASTNESS SOLIDITÀ ALLA LUCE	6, scale 1-8 (UNI EN ISO 105-B02)	5-6, scale 1-8 (UNI EN ISO 105-B02)
FLAME RESISTANCE RESISTENZA AL FUOCO	/	BS 5852 Crib 5 BS 5852 Part 1-2 EN 1021 Part 1-2 IMO resolution FTP Code 2010 IMO resolution A.552 (16)/1999 UNI 9175 Classe 1 IM US CA TB 117-2013
CLEANING LAVAGGIO		

A



H



Simil Leather




Finta Pelle

Category C

PEDRALI®

SIMIL LEATHER / FINTA PELLE

C 

	C45÷C48	C130÷C141	C60÷C64 C90÷C95
COMPOSITION COMPOSIZIONE	80% PVC 18% PES 2% Polyurethane	76% PVC 22% PES 2% Polyurethane	72% PVC 25% Cotton 3% Polyurethane
ABRASION ABRASIONE	50.000 cycles Martindale (EN ISO 5470-2)	60.000 cycles Martindale (ISO 5470-2)	50.000 cycles Martindale (EN ISO 5470-2)
RUBBING FASTNESS SOLIDITÀ ALLO SFREGAMENTO	Dry and Wet 4-5, scale 1-5 (UNI EN ISO 105-X12)	Dry and Wet 4-5, scale 1-5 (ISO 105-X12)	Dry and Wet 4-5, scale 1-5 (UNI EN ISO 105-X12)
LIGHT FASTNESS SOLIDITÀ ALLA LUCE	/	6, scale 1-8 (ISO 105-B02)	6, scale 1-8 (UNI EN ISO 105-B02)
FLAME RESISTANCE RESISTENZA AL FUOCO	BS 5852 Part 1 0,1 EN 1021-1&2 UNI 9175 Classe 1 IM	BS 5852-1 match test EN 1021 Part 1-2 UNI 9175 Classe 1 IM US CA TB 117-2013	BS 5852-1 Part 1 EN 1021-2 IMO RESOLUTION A.652 (16): 1989 UNI 9175 Classe 1 IM US CA TB 117-2013
CLEANING LAVAGGIO			



C

C 45



C 46



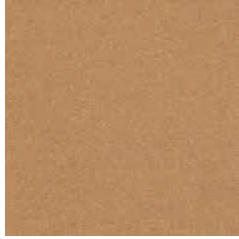
C 47



C 48



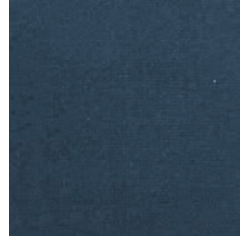
C 62



C 63



C 64



C 60



C 61



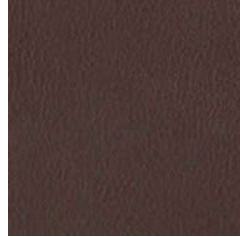
C 90



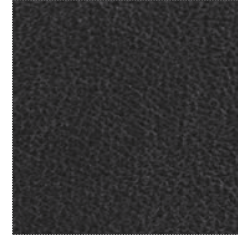
C 94



C 95



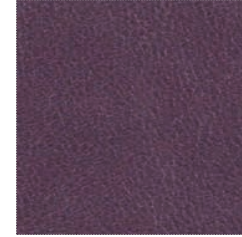
C 93



C 92



C 91



C 139



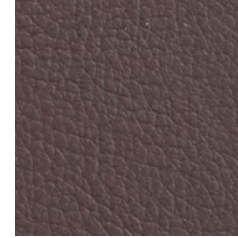
C 140



C 141



C 134



C 130



C 131



C 132



C 133



C 135



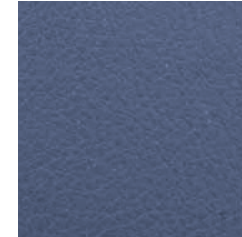
C 136



C 137



C 138



Simil Leather

Finta Pelle

Category C

PEDRALI®

SIMIL LEATHER / FINTA PELLE

C 

C10÷C15 | C17, C18 | C20÷C22

COMPOSITION
COMPOSIZIONE

85% PVC
15% Cotton

ABRASION
ABRASIONE

150.000 cycles
Martindale (EN ISO 5470-2)

LIGHT FASTNESS
SOLIDITÀ ALLA LUCE

≥6, scale 1-8
(EN ISO 105-B02)

FLAME RESISTANCE
RESISTENZA AL FUOCO

B2 (DIN 4102)
BS 5852 Crib 5
EN 1021.1-2
EN 13501-1 - Cs3do
FAR 25853 App F Part 1
IMO RESOLUTION A.652
NF D60-013 - AM 18
NFP 92503 M1
NY/NJ - Port Authority
UFAC Fabric Class 1
German fire standard B1 (except C12 and C22)
US CATB 117
US CATB 133

APPROVED
OMOLOGATO



CLEANING
LAVAGGIO





C

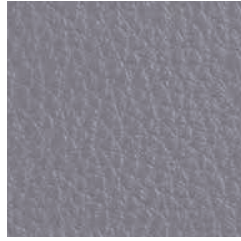
C 14



C 21



C 15



C 17



C 13



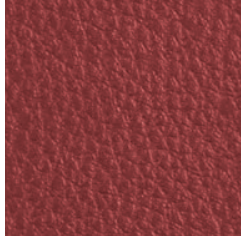
C 12



C 20



C 11



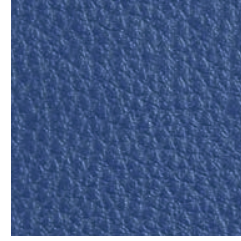
C 18



C 22



C 10



Leather



Pelle

Category P

PEDRALI®

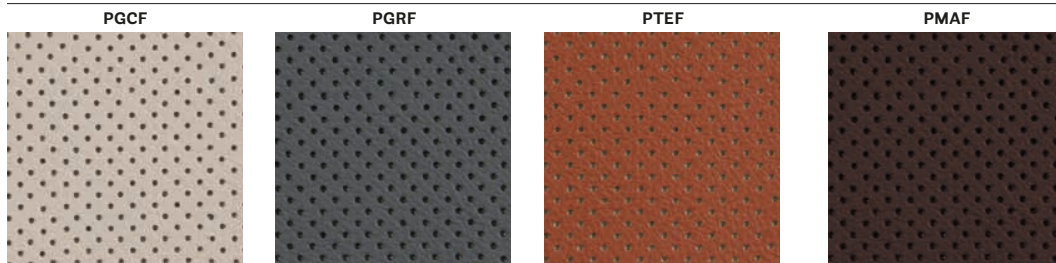
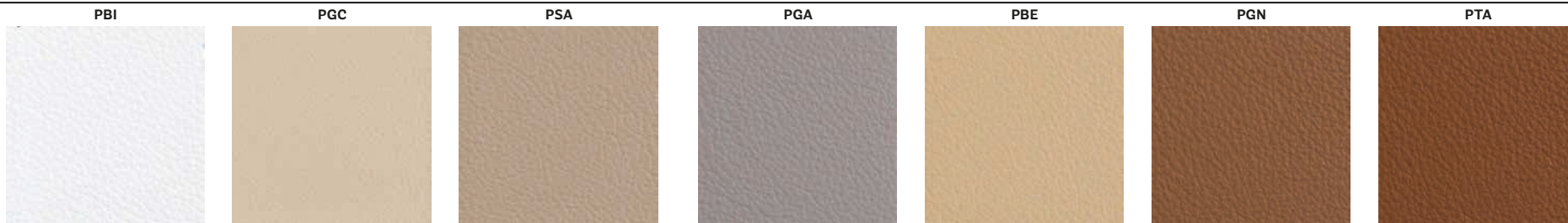
LEATHER / PELLE

P

	PBI, PGC, PSA, PGA, PBE, PGN, PTA, PTE, PRO, PGR, PMA, PNE	PGCF, PGRF, PTEF, PMAF	PBS, PCO, PMS, PVE
COMPOSITION COMPOSIZIONE	Mid grain leather Pelle mezzo fiore	Perforated mid grain leather Pelle mezzo fiore traforata	Vintage mid grain leather Pelle mezzo fiore anticata
RUBBING FASTNESS SOLIDITÀ ALLO SFREGAMENTO	Dry (500 Cycles) and Wet (250 Cycles) ≥4 (UNI EN ISO 11640:1998)	Dry (500 Cycles) and Wet (250 Cycles) ≥4 (UNI EN ISO 11640:1998)	Dry (50 Cycles) and Wet (20 Cycles) ≥3 (UNI EN ISO 11640:1998)
LIGHT FASTNESS SOLIDITÀ ALLA LUCE	≥5 (UNI EN ISO 105 B02)(MET.5)	≥5 (UNI EN ISO 105 B02)(MET.5)	≥2/3 (UNI EN ISO 105-B02)(MET.5)
FLAME RESISTANCE RESISTENZA AL FUOCO	BS 5852:1979 BS EN 1021-1-2:2006 IMO RES A652(16)	BS 5852:1979 BS EN 1021-1-2:2006 IMO RES A652 (16)	BS 5852:1979 BS EN 1021-1-2:2006
APPROVED OMOLOGATO			/
CLEANING LAVAGGIO	Clean with a damp cloth using water. Do not use detergents, solvents, bleached, abrasives. Pulire con un panno umido d'acqua. Non usare detersivi, solventi, candeggianti, abrasivi.	Clean with a damp cloth using water. Do not use detergents, solvents, bleached, abrasives. Pulire con un panno umido d'acqua. Non usare detersivi, solventi, candeggianti, abrasivi.	Clean with a damp cloth and warm water. Do not use detergents, solvents, bleached, abrasives. Pulire con acqua calda e un panno umido. Non usare detersivi, solventi, candeggianti, abrasivi.

P

Collection / Collezione
gruppo mastrotto
LINEA



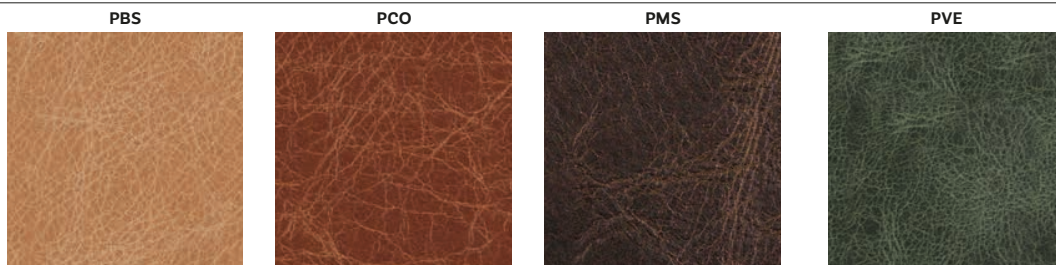
only for collections / solo per collezioni



Vic and Vic Metal

Inner part of the back,
upper part of the seat
Lato interno dello schienale
e parte superiore del sedile

Collection / Collezione
gruppo mastrotto
TUSCANIA



only for collections / solo per collezioni



Malmö

Inga

Hard leather

Cuoio

Category F

GENUINE AND REGENERATED
NATURALE E RIGENERATO

PEDRALI

HARD LEATHER / CUOIO

F

F01, F03÷F09

COMPOSITION
COMPOSIZIONE

Genuine hard leather, tanned with vegetable substances

Cuoio naturale, conciato con sostanze vegetali

F11÷F13, F17÷F19

Regenerated hard leather. Tanned leather cuttings and shavings linked with natural rubber lattelx

Cuoio rigenerato. Ritagli e rasatura di cuoio conciato legati con lattice di gomma naturale

RUBBING FASTNESS

SOLIDITÀ ALLO SFREGAMENTO

Satisfactory up to maximum 700 abrasions in humid environment and 1000 abrasions in dry environment

Soddisfacente sino a max 700 abrasioni all'umido e 1000 abrasioni al secco

Dry and Wet >1000
(UNI EN ISO 11640)

LIGHT FASTNESS

SOLIDITÀ ALLA LUCE

/

4-5
Xenotest Method

FLAME RESISTANCE

RESISTENZA AL FUOCO

/

BS EN 1021 1&2
BS 5852 Part 1
US CA TB 117 E Part 1

CLEANING

LAVAGGIO

Clean with a damp cloth using water

Pulire con un panno umido d'acqua

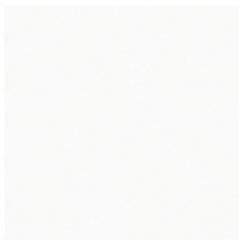
Clean with a damp cloth using water

Pulire con un panno umido d'acqua

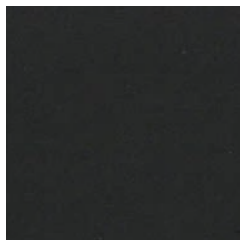


GENUINE HARD LEATHER
CUOIO NATURALE

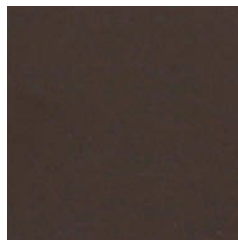
F 07



F 05



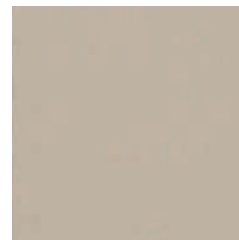
F 01



F 06



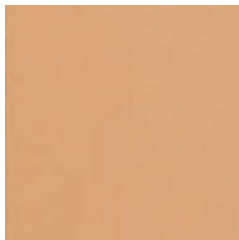
F 09



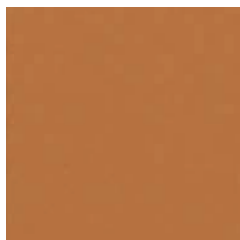
F 08



F 03



F 04



only for collections / solo per collezioni



Fox



Gliss



Inga



Kuadra



Kuadra XL



Malmö



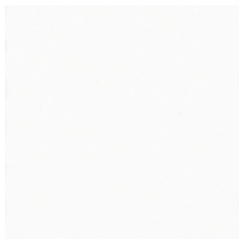
Mood



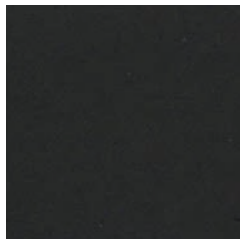
Woody

REGENERATED HARD LEATHER
CUOIO RIGENERATO

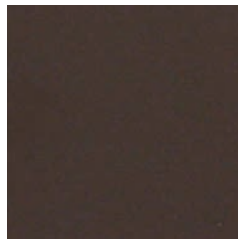
F 18



F 11



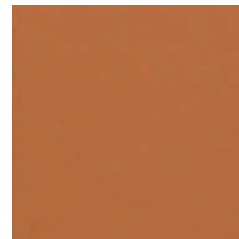
F 12



F 19



F 13



F 17



only for collections / solo per collezioni



Inga



Kuadra



Kuadra XL