

MAGIC 300

Fabrics, Leather and Eco-leather for Chairs, Sofas and Beds

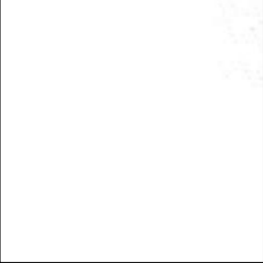


BONALDO

Indy 

Category: 600

Composition: 100% CO



67A



67B



67Y



67D



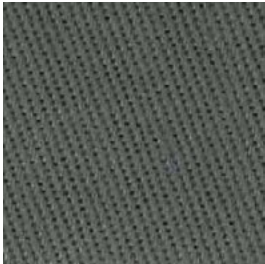
67G



67F



67E



68A



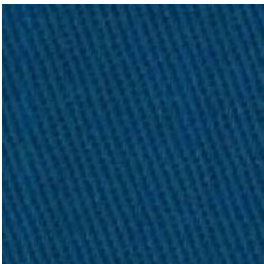
68B



67V



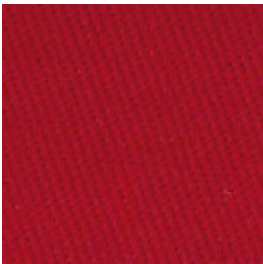
67T



67U



67N



67J

Milos

Category: 900

Composition: 60% CO, 40% LI



98A



98D



98F



98L



98N



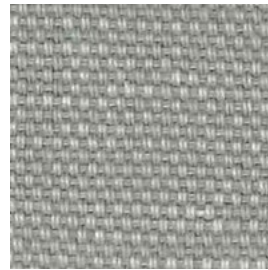
98U



98T



98Y



98B



98J

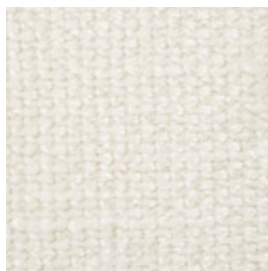
Pastello

Category: 800

Composition: 85% PL, 15% VI



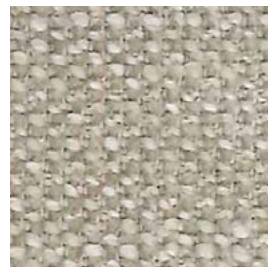
8D63



8D62



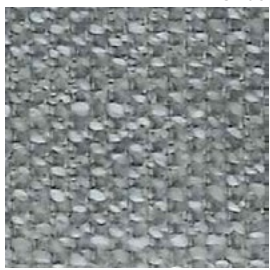
8D61



8D58



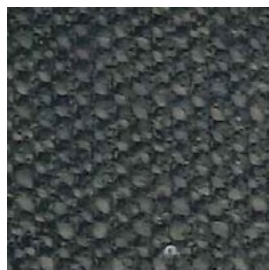
8D60



8D59



8D57



8D55



8D54



8D53

Eco-leather Secret 

Category: 800

Composition: 76% PVC, 22% PES, 2% PU



Creta 

Category: 900

Composition: 63% CO, 37% LI



96C



96D



9A77



9A72



9A68



96L



96W



9A76



9A64



96E



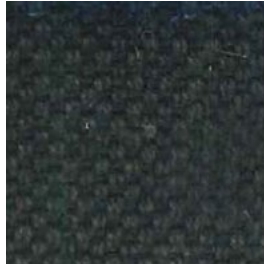
96Y



97A



96Z



97B



96P



96R

Oxana 

Category: 900

Composition: 63% CO, 37% PL



97Q



97G



97H



97E



97L



97M



97R



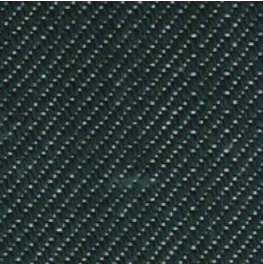
97T



97K



97S



97N



97P

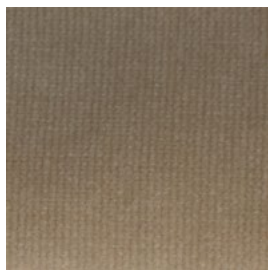
Azimut

Category: 900

Composition: 92% PL, 5% CO, 3% other



9B43



9B02



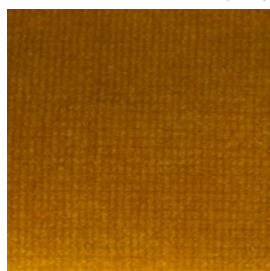
9B07



9B08



9B09



9B26



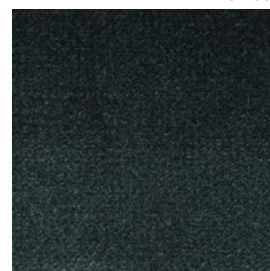
9B21



9B18



9B17



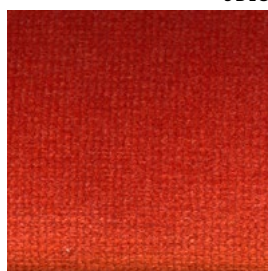
9B20



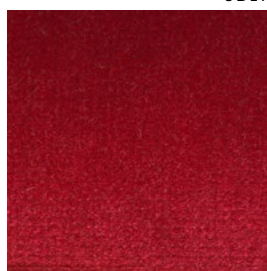
9B45



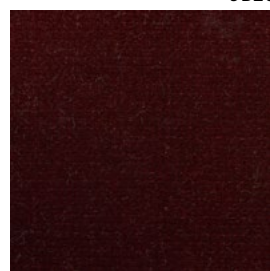
9B05



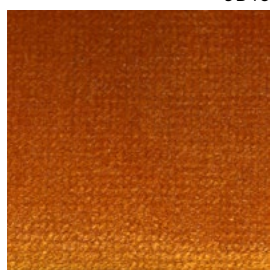
9B33



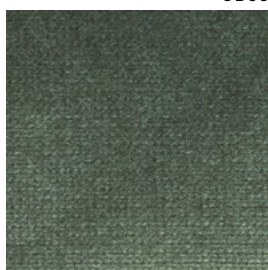
9B34



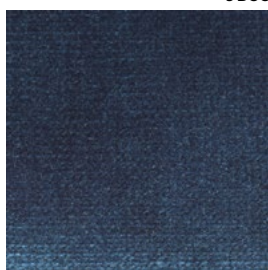
9B36



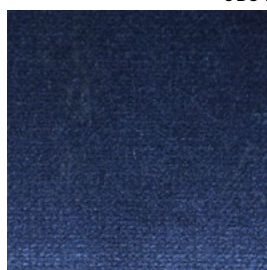
9B31



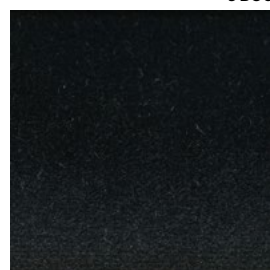
9B22



9B19



9B16

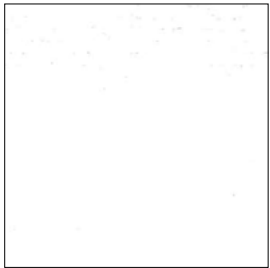


9B48

Ego

Category: *Class*

Composition: 63% VI, 18% PL, 12% CO, 7% LI



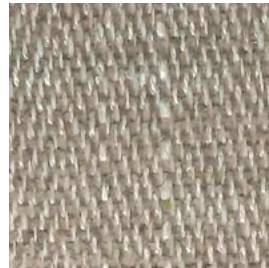
EA73



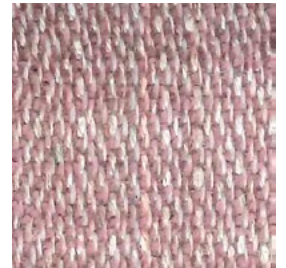
E58



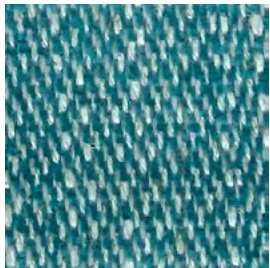
EA68



EA72



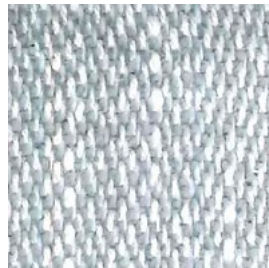
E62



E60



EA66



E59

Avenida

Category: *Class*

Composition: 30% CO, 30% VI, 26% PL, 14% LI



EA45



EA56



EA46



EA47

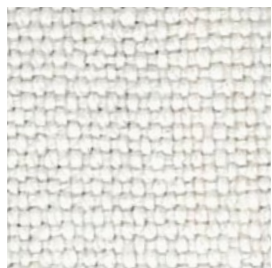


EB03

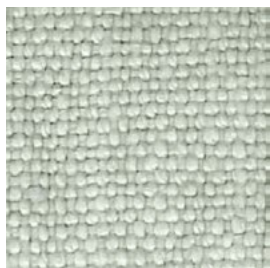


EA48

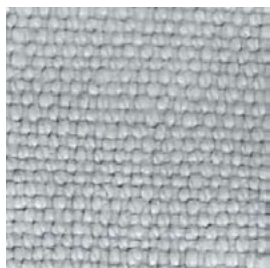
Linus 
Category: *Class*
Composition: *100% LI*



SA17



SA18



SA27



SA26



SA25



SA23



SA35



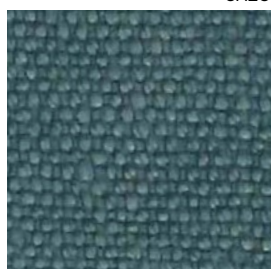
SA34



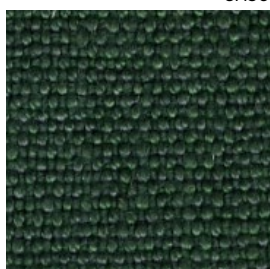
SA30



SA36



SA37



SA38



SA20

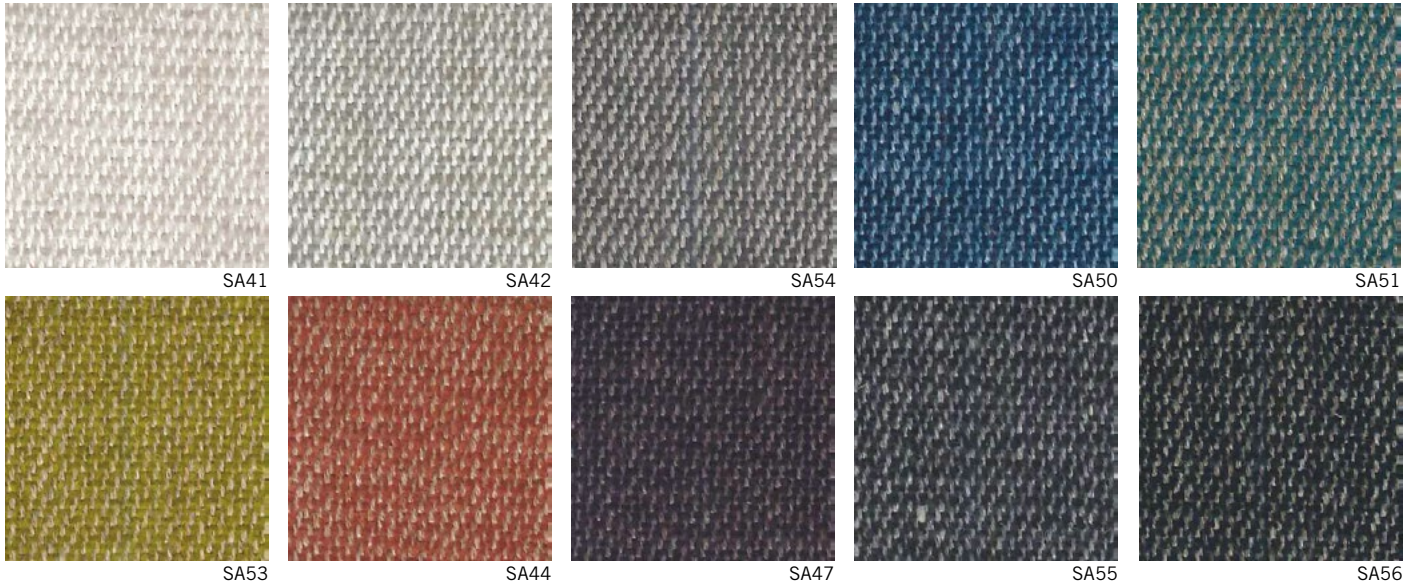


SA21

Russel-Flutter 

Category: *Class*

Composition: 39% VI, 24% PC, 19% CO, 13% PL, 5% LI



Brera-Wonderful 

Category: *Must*

BRERA Composition: 64% VI, 15% PL, 11% CO, 10% LI

WONDERFUL Composition: 60% LI, 40% CO



Damié

Category: *Must*

Composition: 47% CO, 35% VI, 18% LI



M72



M86



M84



MC35



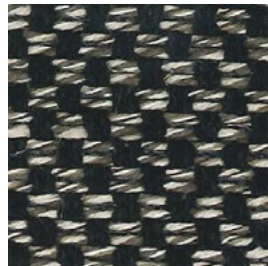
M75



M98



M74



M73

Rico

Category: *Must*

Composition: 56% CO, 30% VI, 14% LI



MA01



MA02



MA20



MA05



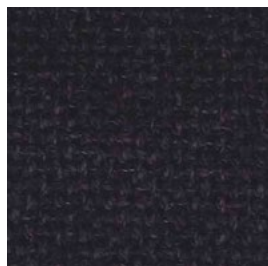
MA06



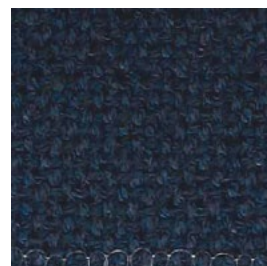
MA21



MA11



MA10



MA09



MA07

Vegas 

Category: *Must*

Composition: 55% VI, 45% CO



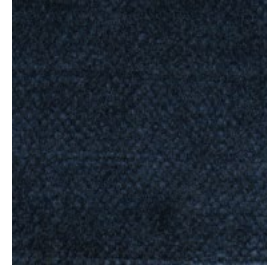
MB02



MB11



MB12



MB13



MB15



MB04



MB10



MB07



MB08



MB17

St. Moritz

Category: *Must*

Composition: 80% WO, 20% PA



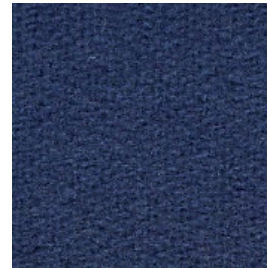
MC61



MC79



MC78



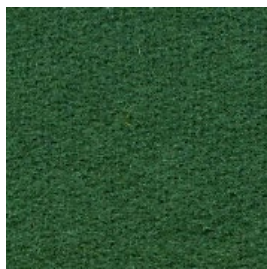
MC80



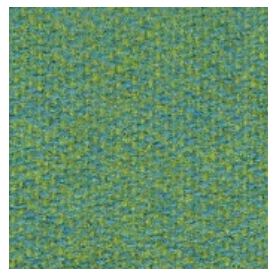
MC84



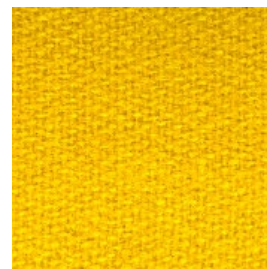
MC74



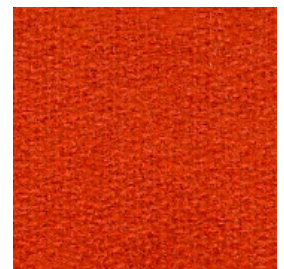
MC75



MC86



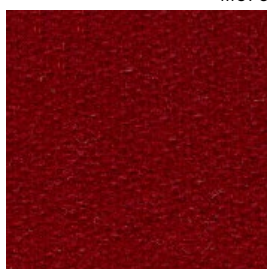
MC66



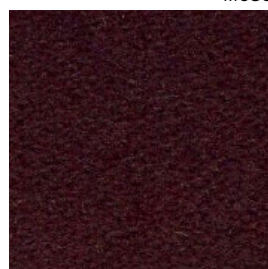
MC67



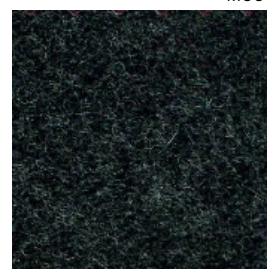
MC68



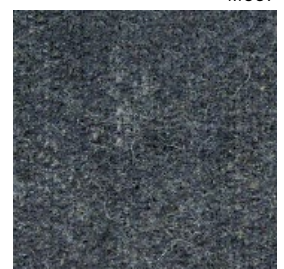
MC69



MC72



MC83



MC82



MC87

Boemian

Category: *Must*

Composition: 25% VI, 25% PL, 15% PC, 15% WO, 13% LI, 5% CO, 2% PA



MC40



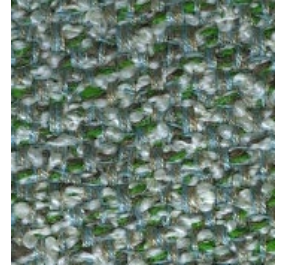
MC41



MC46



MC42



MC43



MC48

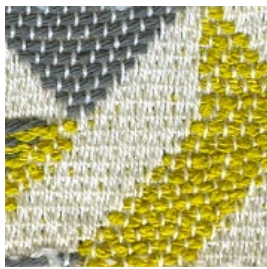
Rakam

Category: *Must*

Composition: 72% CO, 15% VI, 8% LI, 5% PA



MC50



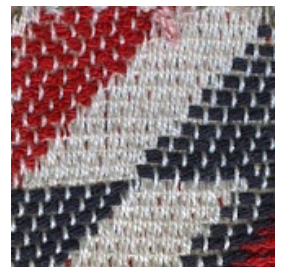
MC52



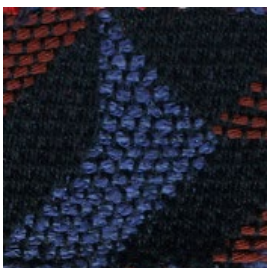
MC53



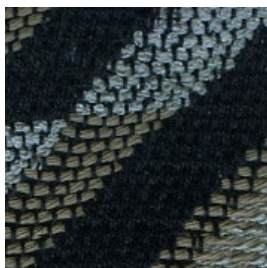
MC51



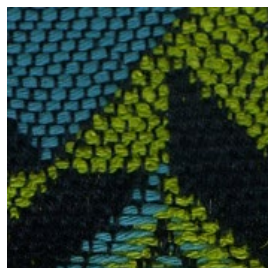
MC54



MC57



MC58




MC55

Albia - Mamba

Category: *Class* - ALBIA Composition: 63% CO, 20% VI, 10% LI, 7% PA 

Category: *Must* - MAMBA Composition: 60% CO, 25% VI, 15% LI 

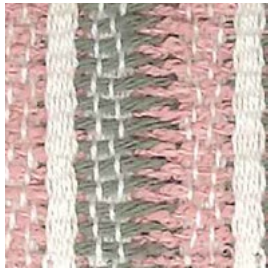
BULIO Composition: 72% CO, 15% VI, 8% LI, 5% PA 



MAMBA M92



ALBIA EA59



BULIO M87



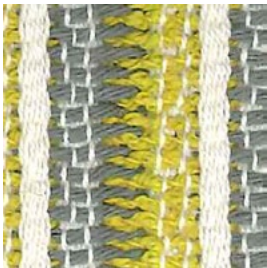
MAMBA M91



ALBIA EA58



MAMBA M96



BULIO M89



ALBIA EA64



MAMBA M95



ALBIA EA63



ALBIA EA62



BULIO M88



MAMBA M94



ALBIA EA61



MAMBA M97



ALBIA EA65

Colpes - Fred

Category: *Must*

ROMANOV Composition: 62% CO, 20% VI, 11% LI, 7% PA  

FRED Composition: 35% CO, 28% VI, 22% PL, 15% LI   

FLUTTER Composition: 58% CO, 27% VI, 15% LI   



ROMANOV MA82



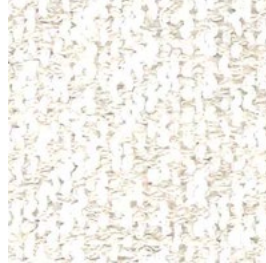
ROMANOV MA77



FRED MA63



FRED MA67



FLUTTER MA52



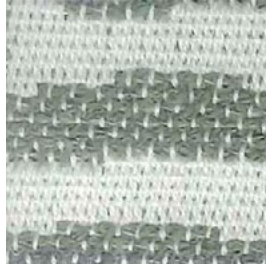
FLUTTER MA56



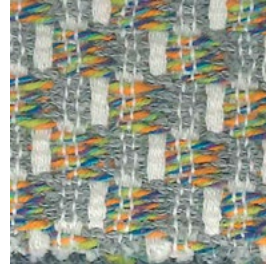
FLUTTER MA54



ROMANOV MA80



ROMANOV MA76



FRED MA62



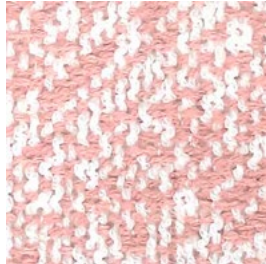
FRED MA64



FLUTTER MA57



FLUTTER MA53






FLUTTER MA58

Oesis - Naos

Category: *Must*

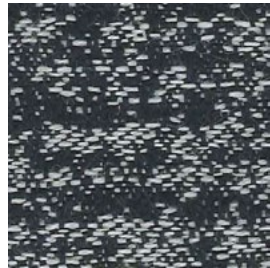
OXFORD Composition: 50% WO, 40% CO, 10% PA   

DELAIN Composition: 55% WO, 37% CO, 8% PA  

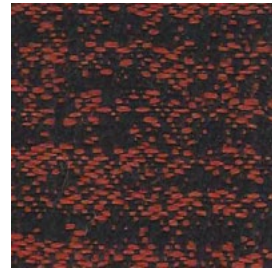
OESIS Composition: 35% VI, 24% PL, 23% CO, 18% LI   



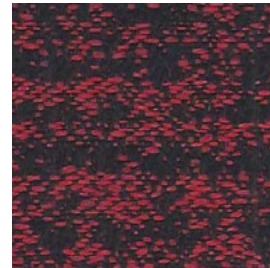
OXFORD MB40



OXFORD MB38



OXFORD MB36



OXFORD MB37



OXFORD MB39



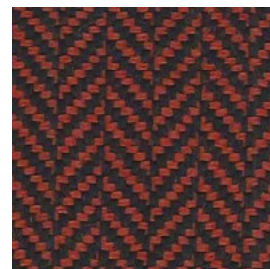
OXFORD MB35



DELAIN MB24



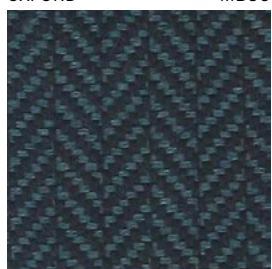
DELAIN MB57



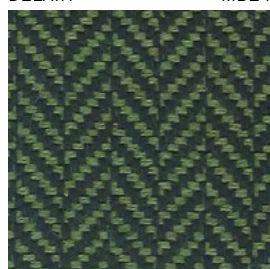
DELAIN MB22



DELAIN MB23



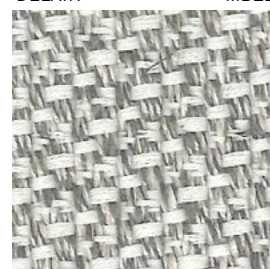
DELAIN MB25



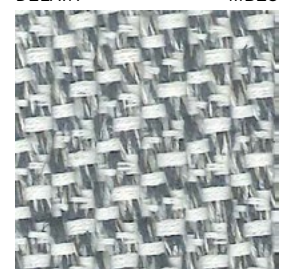
DELAIN MB21



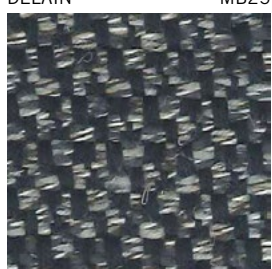
OESIS MB51



OESIS MB55



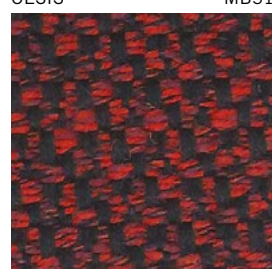
OESIS MB54



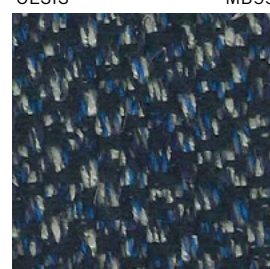
OESIS MB52



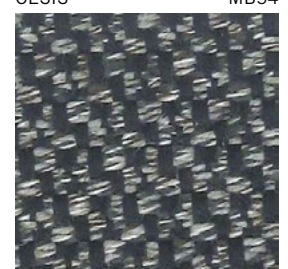
OESIS MB47



OESIS MB48



OESIS MB53



OESIS MB49

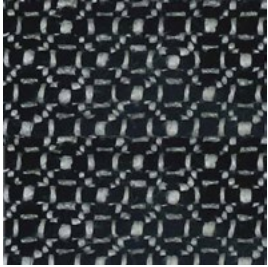
Pixel

Category: *Class*

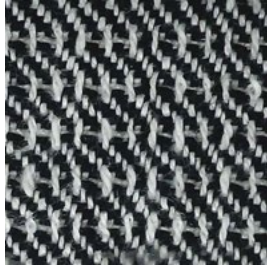
PIXEL ROMBO, PIXEL DIAGONALE Composition: 48% LI, 47% CO, 5% AF

PIXEL GALLES Composition: 95% CO, 5% AF

PIXEL RETE, PIXEL UNITO Composition: 48% LI, 47% CO, 5% AF



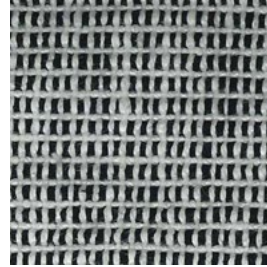
PIXEL ROMBO SA64



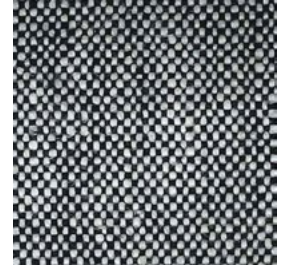
PIXEL DIAGONALE SA80



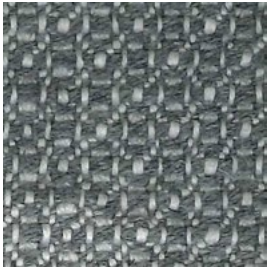
PIXEL GALLES SA60



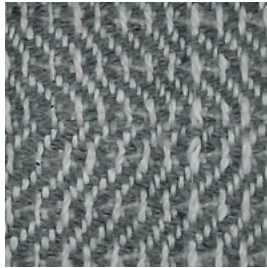
PIXEL RETE SA68



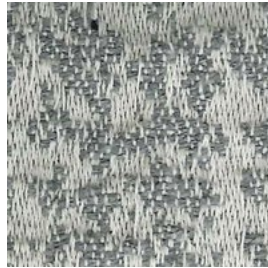
PIXEL UNITO SA72



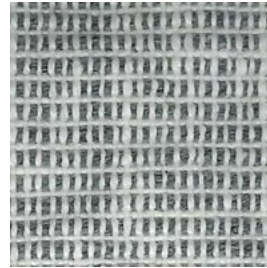
PIXEL ROMBO SA65



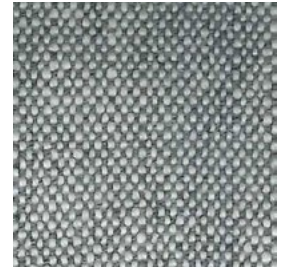
PIXEL DIAGONALE SA81



PIXEL GALLES SA61



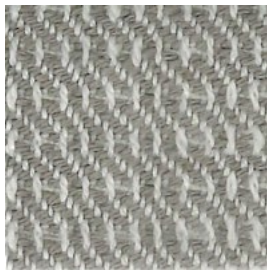
PIXEL RETE SA69



PIXEL UNITO SA73



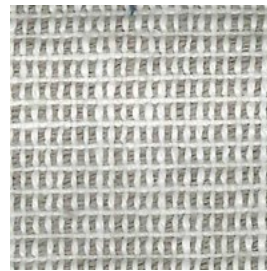
PIXEL ROMBO SA62



PIXEL DIAGONALE SA78



PIXEL GALLES SA58



PIXEL RETE SA66



PIXEL UNITO SA70



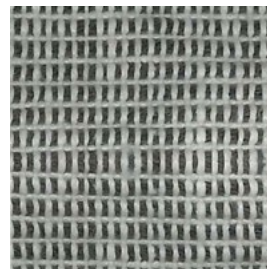
PIXEL ROMBO SA63



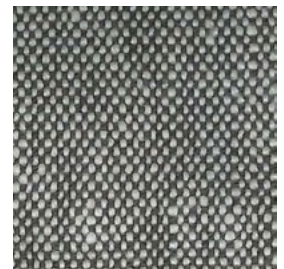
PIXEL DIAGONALE SA79



PIXEL GALLES SA59



PIXEL RETE SA67





PIXEL UNITO SA71

Curmi 1

Category: Must

DIPLO Composition: 35% CO, 47% VI, 23% PL, 15% LI  

CURMI Composition: 45% CO, 25% PL, 20% VI, 10% LI   

COMO Composition: 52% CO, 25% PL, 15% VI, 8% LI  

TIGLIO Composition: 50% VI, 32% CO, 8% PC, 7% LI, 3% WO  



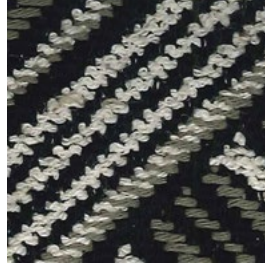
DIPLO MB88



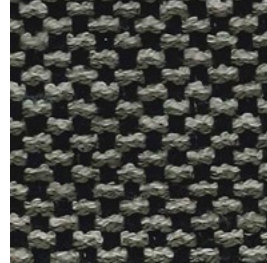
CURMI MB70



CURMI MB91



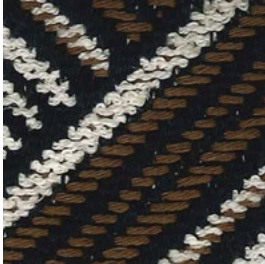
COMO MB60



CURMI MB68



CURMI MB66



COMO MB59



DIPLO MB81



CURMI MB89



DIPLO MB82



TIGLIO MB75




TIGLIO MB74

Curmi 2

Category: Must

DIPLO Composition: 35% CO, 47% VI, 23% PL, 15% LI  

CURMI Composition: 45% CO, 25% PL, 20% VI, 10% LI   

COMO Composition: 52% CO, 25% PL, 15% VI, 8% LI  

TIGLIO Composition: 50% VI, 32% CO, 8% PC, 7% LI, 3% WO  



TIGLIO

MB76



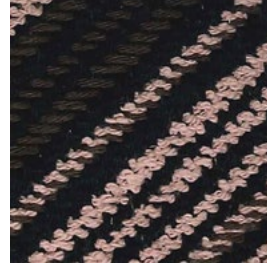
CURMI

MB90



DIPLO

MB83



COMO

MB61



TIGLIO

MB80



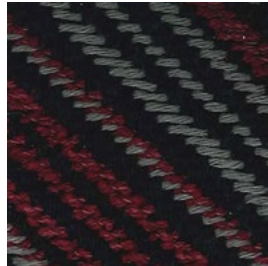
CURMI

MB72



DIPLO

MB87



COMO

MB65



TIGLIO

MB78



CURMI

MB71



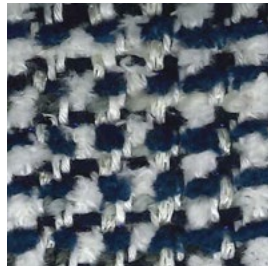
DIPLO

MB86



COMO

MB64



TIGLIO

MB77



CURMI

MB92




DIPLO

MB85



COMO

MB63

Capri 
Leather - Capri
Category: Capri



L01



L26



L03



L34



L41



L27



L40



L28



L07



L44



L30



L37



L35



L48



L06



L08



L04




L50

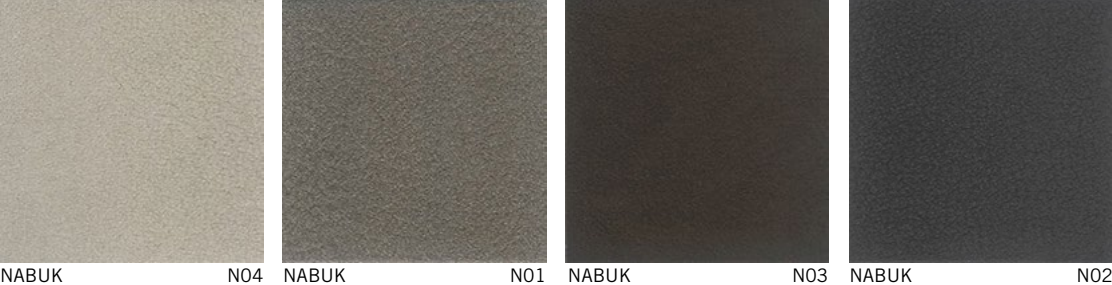


L51



L09

Ponza 
Leather - Nabuk
Category: Ponza



NABUK N04 NABUK N01 NABUK N03 NABUK N02

Ponza 
Leather - Anilina
Category: Ponza



ANILINA A01 ANILINA A02 ANILINA A05 ANILINA A04 ANILINA A06
ANILINA A03

June 2019
BOX T44 - 2019

IT _ I colori e le finiture visualizzate in questo documento sono puramente indicativi e possono differire dagli originali. L'azienda si riserva il diritto di apportare modifiche ai propri colori di serie in qualsiasi momento e senza alcun obbligo di preavviso.

EN _ Colours and finishes shown in this document are approximate and may differ from actual ones. The company reserves the right to make modifications to this list at any time and without prior notice.